

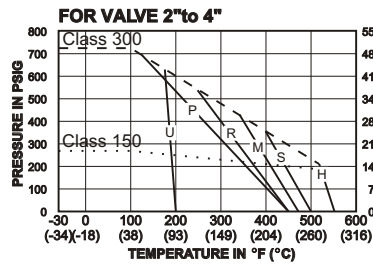
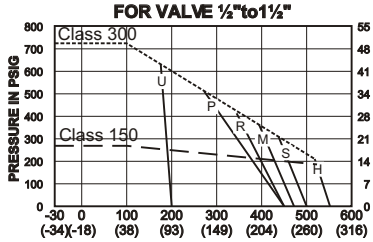
SERIES 9000 SPLIT BODY FLANGE BALL VALVE

9150 ANSI CLASS 150

9300 ANSI CLASS 300



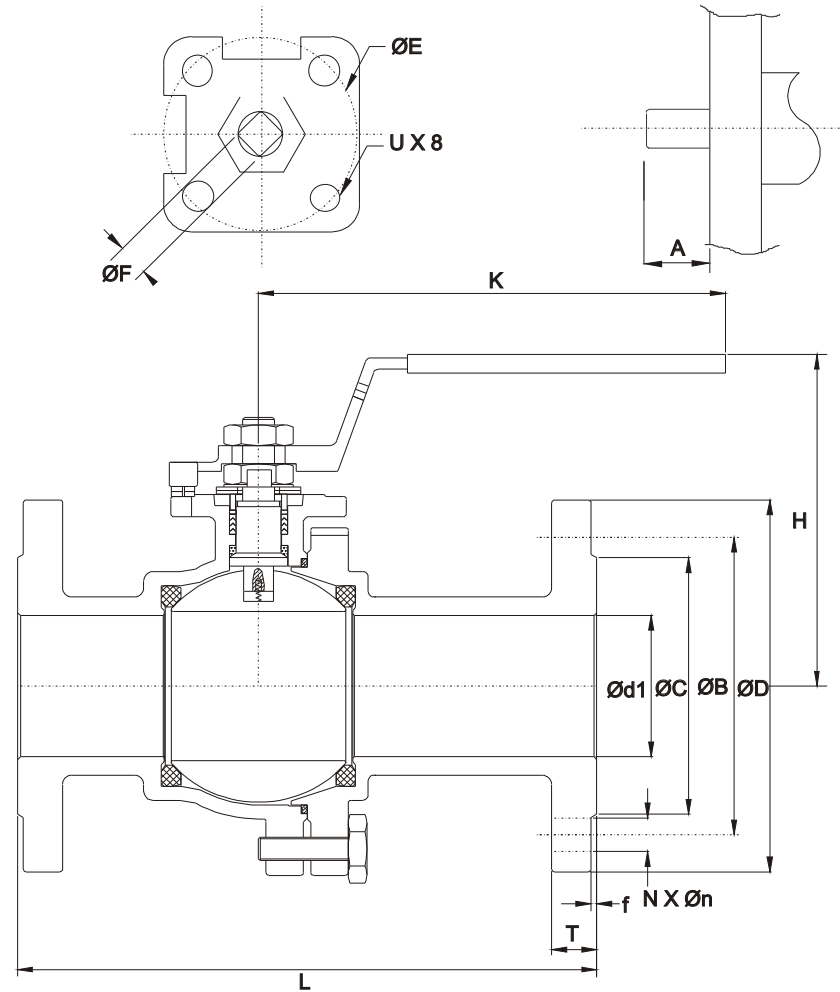
PRESSURE TEMPERATURE RATINGS



SEAT TYPE

- U UHMWPE
- P PTFE
- R RPTFE
- M MG1241
- S 50% S/S FILLED PTFE
- H HI-TEMP

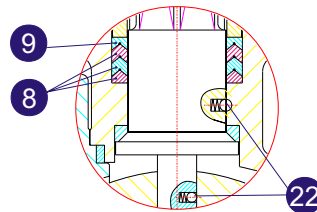
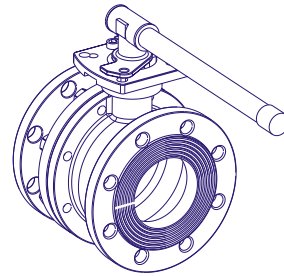
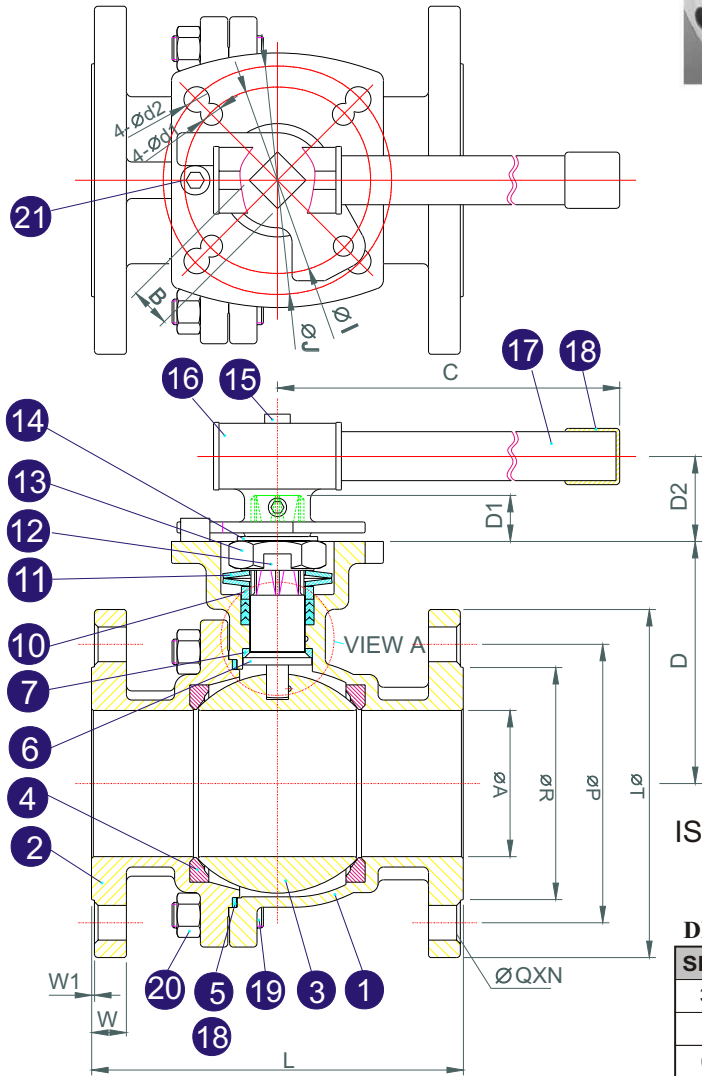
Size	A	ØE	ØF	U
1/2"	.56	F03/F04	.34	.15/.23
3/4"	.56	F03/F04	.34	.15/.23
1"	.60	F04/F05	.43	.23/.27
1 1/4"	.60	F04/F05	.43	.23/.27
1 1/2"	.80	F07/F10	.67	.35/.43
2"	.80	F07/F10	.67	.35/.43
2 1/2"	.80	F07/F10	.67	.35/.43
3"	.83	F10/F12	.87	.43/.55
4"	.83	F10/F12	.87	.43/.55



Size	ØB	*ØB	ØC	ØD	*ØD	H	K	L	*L	N	*N	T	*T	Ød1	Øn	*Øn	f
1/2"	2.38	2.62	1.38	3.51	3.74	3.23	5.32	4.26	5.50	4	4	.44	.56	.50	.63	.75	.06
3/4"	2.76	3.25	1.69	3.86	4.61	3.39	5.32	4.61	6.00	4	4	.44	.63	.75	.63	.75	.06
1"	3.13	3.51	2.01	4.26	4.89	3.86	6.50	5.00	6.50	4	4	.44	.69	1.00	.63	.75	.06
1 1/2"	3.88	4.50	2.88	5.00	6.15	4.69	7.88	6.50	7.50	4	4	.56	.82	1.50	.63	.75	.06
2"	4.75	5.00	3.62	5.99	6.50	5.04	7.88	7.00	8.50	4	8	.63	.88	2.00	.75	.75	.06
2 1/2"	5.50	5.87	4.14	7.01	7.49	6.38	9.85	7.50	9.50	4	8	.69	1.00	2.50	.75	.87	.06
3"	6.00	6.62	5.00	7.49	8.27	6.78	9.85	8.00	11.51	4	8	.75	1.13	3.00	.75	.87	.06
4"	7.51	7.88	6.19	9.02	10.01	7.76	11.82	9.00	12.00	8	8	.94	1.25	4.00	.75	.87	.06

* Dimension for ANSI Class 300

TRIAD[®]
process equipment
Series 9150D 3" Through 6"



VIEW A

ISO 5211 Mounting Pad
ANSI CLASS 150
Direct Actuator Mount
DIMENSIONS (in)

SIZE	ØA	B	C	D	D1	D2	ØI	ØJ	L	N	ØP	ØQ	ØR	ØT	W	W1	Ød1	Ød2	ISO5211
3"	3.00	.86	12.5	5.22	.90	1.82	4.02	4.92	8.01	4	5.98	.75	5.00	7.50	.75	.06	.47	.55	F10/F12
4"	4.00	.86	12.5	6.18	.90	1.82	4.02	4.92	9.00	8	7.50	.75	6.19	9.00	.95	.06	.47	.55	F10/F12
6"	6.00	.86 1.06	29.55	8.25	1.12	2.62	4.92	5.51	15.51	8	9.50	.87	8.50	11.00	1.00	.06	.55	.70	F12/F14

MATERIALS LIST

NO.	PART NAME	MATERIAL	Q'TY
1	Body	CF8M	1
2	Cap	CF8M	1
3	Ball	SUS 316	1
4	Seat	RPTFE	2
5	Joint Gasket	PTFE	1
6	Stem	SUS 316	1
7	Stem Seal	RPTFE	1
8	Gland Packing	PTFE	3
9	Gland Packing	25% Glass Fiber Filled+ PTFE	1
10	Gland Bush	SUS 304	1
11	Belleville Washer	SUS 301	2
12	Stop Washer	SUS 304	1
13	Stem Nut	SUS 304	1
14	Stem Washer	SUS 304	1
15	Handle Nut	SUS 304	2
16	Handle -A	SUS 304	1
17	Handle -B	SUS 304	1
18	Handle Sleeve	VINYL	1
19	Bolt	SUS 304	*
20	Bolt Nut	SUS 304	*
21	Stop Pin	SUS 304	1
22	Anti-static Device	SUS 304	2

* For 3"-4"- 8pcs of bolt ;and bolt nuts.
For 6"- 10pcs of stud and nuts.



Sizing Guide

Triad Series 9150D direct mount 150# Flanged ball valve with Radius Series A rack and pinion actuators.

9150D/ Actuator Combinations

Size	Break Torque	Spring Return	Actuator Spring End Torque	Insert Required	Double Acting	Actuator Torque At 80psi	Insert Required
1/2"	110	AS008	227	Bracket	AD003F03.35	132	None
3/4"	160	AS008	227	Bracket	AD005F04	275	None
1"	170	AS008	227	RIN6743	AD005F04orF05	275	None
1 1/4"	200	AS008	227	RIN6743	AD005F04orF05	275	None
1 1/2"	230	AS020	474	RIN8767	AD008	583	None
2"	250	AS020	474	RIN8767	AD008	583	None
2 1/2"	650	AS030	683	RIN8767	AD020	875	RIN8767
3"	750	AS040	938	RIN10687	AD020	1330	None
4"	1200	AS060	1430	RIN10687	AD030	1832	None
6"	4000	AS250	1430	RIN14287	AD100	6344	RIN14287

Notes: Obvious over sizing is due to the incompatibility of smaller actuator/ insert dimensions required for direct mounting.

In these instances a bracket and coupling is required.

Close sizing of breakaway and output torques should only be used on clean, near ambient lubricous fluids.