

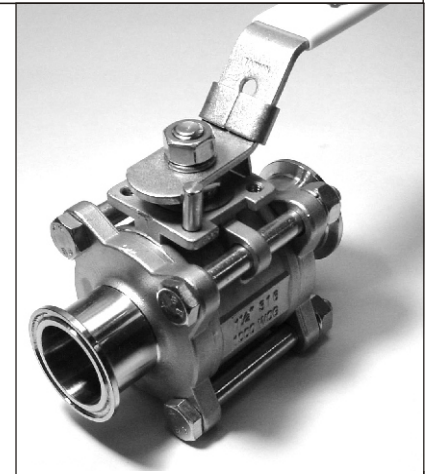
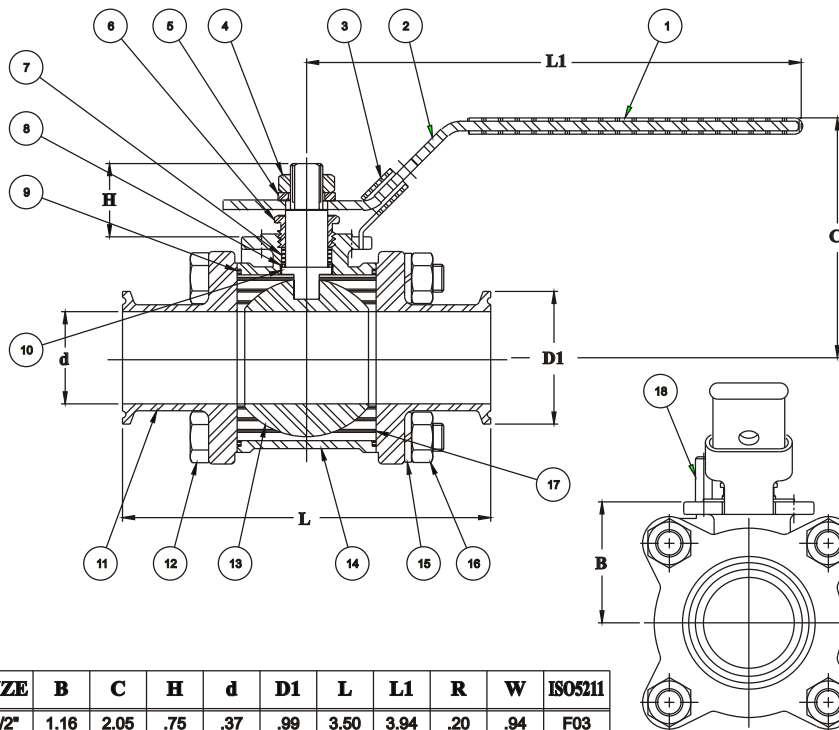
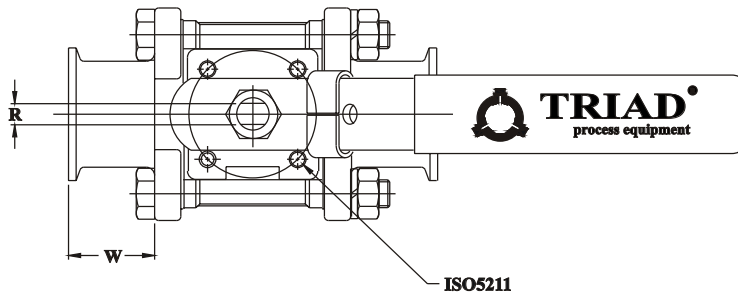
Series 920-61 Sanitary Three Piece Stainless Steel Valve



Three Piece Through Port Design
Cavity Fillers Standard
240 Grit Polish
Assembled Dry In a Clean Room
Silicone Free

Specifications:
Temperature: to 400° f
for PTFE cavity fillers.
Optional Seats: Peek, Filled PTFE
UHMW, TFM

Pressure Rating: 1000 wog when
welded in line. Clamp end valves
limited by style of clamp used..

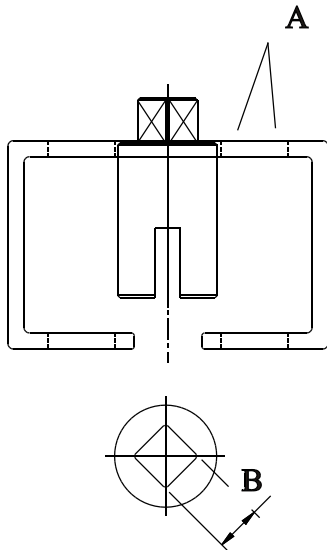
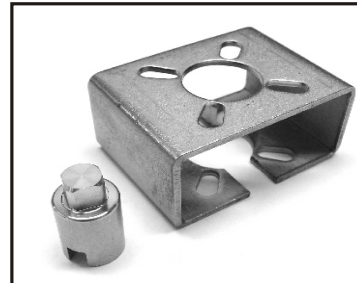


Average Breakaway Torques (inch pounds):			
1/2"	52	2"	416
3/4"	69	2 1/2"	545
1"	133	3"	782
1 1/2"	336	4"	1286

SIZE	B	C	H	d	D1	L	L1	R	W	ISO5211
1/2"	1.16	2.05	.75	.37	.99	3.50	3.94	.20	.94	F03
3/4"	1.36	2.24	.75	.63	.99	3.98	3.94	.20	1.10	F03
1"	1.38	2.36	.85	.87	1.99	4.49	5.16	.26	1.22	F04
1-1/2"	1.81	3.54	1.16	1.38	1.99	5.51	7.36	.33	1.30	F05
2	2.13	4.02	1.16	1.87	2.52	6.14	7.36	.33	1.81	F05
2-1/2"	2.95	5.51	1.65	2.37	3.05	7.76	10.24	.47	1.69	F07
3"	3.35	6.10	1.65	2.87	3.58	9.02	10.24	.47	1.97	F07
4"	4.17	7.09	2.26	3.83	4.69	9.57	11.42	.63	1.77	F11

ITEM	PART NAME	MATERIAL	QTY
1	PLASTIC COVER	PLASTIC	1
2	HANDLE	AISI 304	1
3	LOCKING DEVICE	AISI 304	1
4	STEM NUT	AISI 304	1
5	STEM WASHER	AISI 304	1
6	GLAND NUT	AISI 304	1
7	STEM PACKING	PTFE	1
8	THRUST WASHER	PTFE	1
9	BODY SEAL	PTFE	2
10	STEM	AISI 316	1
11	CAP	ASTM-A361-CF8M	2
12	BOLT	AISI 304	4
13	BALL	AISI 316	1
14	BODY	ASTM-A361-CF8M	1
15	LOCK WASHER	AISI 304	4
16	NUT	AISI 304	4
17	SEAT	PTFE	2
18	STOP PIN	AISI 304	1

Bulletin BRKT-920
Actuator Mounting Kit



Triad offers mounting kits to adapt the series 920-61 sanitary clamp end ball valves to common ISO actuators. The kit comes with a 304ss stamped mounting bracket and machined 304SS coupling and stainless steel mounting fasteners.

Valve Size	Bracket Kit	Actuator Mounts (A)	B
1/2"	1	F03 F04	0.43
3/4"	1	F03 F04	0.43
1"	2	F04 F05	0.43
1"	2A	F04 F05	0.67
1 1/2"	3	F04 F05	0.67
1 1/2"	3A	F04 F05	0.86
2"	4	F04 F05	0.67
2"	4A	F04 F05	0.87
2 1/2"	5	F07 F10 F12	0.75
2 1/2"	5A	F07 F10 F12	0.86
3"	6	F07 F10 F12	0.75
3"	6A	F07 F10 F12	1.06
4"	7	F07 F10 F12	0.75
4"	7A	F07 F10 F12	1.06