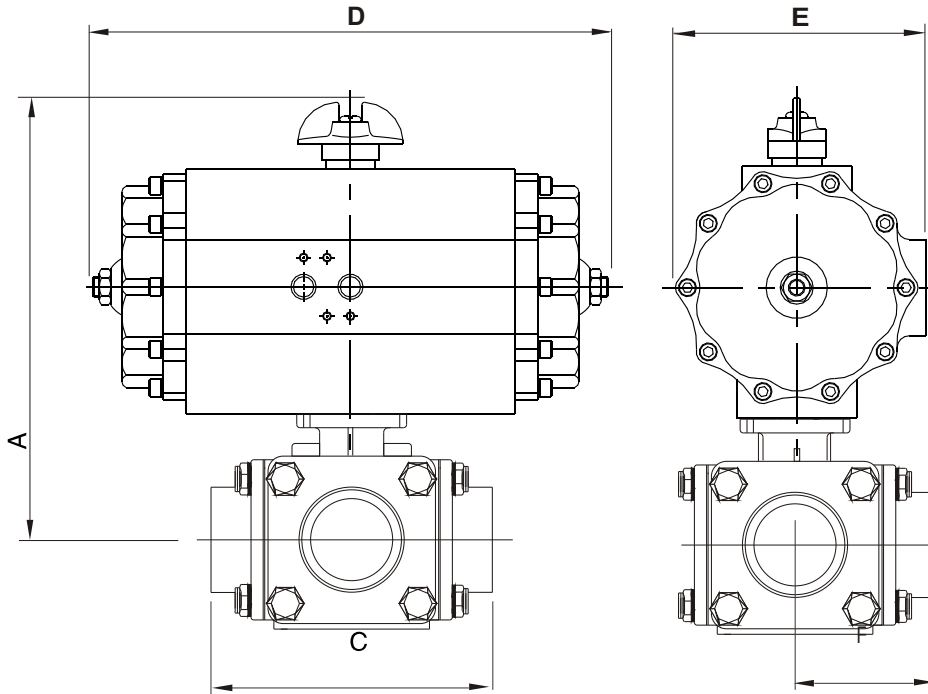


AUTOMATED VALVE ASSEMBLY
SERIES 36 L or T Port
PNEUMATIC BALL VALVE



TECHNICAL SPECIFICATIONS	
General	THREE WAY
Body	316SS
Ball/ Stem	316SS
Seat	RPTFE
Maximum Pressure	1000WOG 1/2"-1" 800 WOG 1 1/4"-2"
Actuator Pressure	120PSIG Maximum
Connection	NPT/SW

Actuator sized for 80psig supply pressure.														
SIZE	A		C	D		E		F	Actuator		Weight		Assembly # *	
	Double Acting	Spring Return		Double Acting	Spring Return	Double Acting	Spring Return		Double Acting	Spring Return	Double Acting	Spring Return	Double Acting	Spring Return
1/2"	5.98	6.78	4.12	7.00	8.43	3.54	4.41	2.06	AD-005	AS-008	5.80	9.30	36001	36011
3/4"	6.30	7.00	4.41	7.00	8.43	3.54	4.41	2.20	AD-005	AS-008	7.50	10.00	36002	36012
1"	7.33	8.11	5.04	8.43	11.22	4.41	5.94	2.52	AD-008	AS-020	13.30	19.00	36003	36013
1 1/4"	7.64	8.42	5.51	8.43	11.22	4.41	5.94	2.75	AD-008	AS-020	15.40	21.10	36004	36014
1 1/2"	8.84	10.35	6.30	9.41	10.91	5.24	6.65	3.15	AD-012	AS-030	21.90	29.60	36005	36015
2"	9.60	11.49	7.56	11.22	13.30	5.94	6.65	3.78	AD-020	AS-040	34.20	44.10	36006	36016

* Standard assembly is for an L ported valve. Suffix assembly # with T for T port valves.