

## Segmented V Flow Valves

90SV / 93SV / 96SV



Segmented V Ball  
For Quarter Turn Control  
ANSI 150#, 300# and 600#



Triad offers a Segmented V equal percentage rotary control valve for uncompromising control of process fluids and gases. It is well suited for clean fluids both viscous and corrosive and performs well in slurry applications. The valve employs an engineered V pattern that produces a high Cv. The valve operates between 0° closed and 90° full open. This rotary motion enables the valve to be operated by economical quarter turn actuators. The valve is less costly when compared to linear style globe control valves. The ball is 316SS with chrome facing that is matched against a hard faced alloy 6 seat. Optional PTFE Seat.

The valve is well suited for both electric and pneumatic rotary modulating control. The valve is designed to operate at low torque values, even in abrasive and high solid applications, which makes them economical to actuate. The standard valve body is 150#, 300# or 600# 316SS or WCB flanged or 150#/300# wafer. Available in sizes 1" through 28".

### Optional Ball and Trim for Special Applications

#### Ball



On size 1" Triad offers special low flow V profiles that are suitable for small Cv's and produces micro-fine throttling characteristics for processes requiring precise low flow control. Please consult factory.

#### Trim



#### Noise reduction trim construction

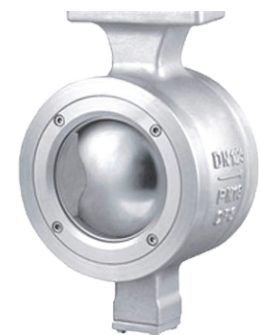
Triad offers a special trim on the Segment ball to reduce cavitation noise and vibration. This is especially effective in a gas and steam process.

#### STANDARDS:

- B16.34 

#### FEATURES:

- Precise contouring of the V-notch provides excellent control characteristics for an extensive variety of flow application.
- Splined connection between the shaft and ball ensures precise control and low hysteresis.
- Seat Retainer is side mounted and allows for ease of maintenance and repair.
- Superior trunnion bearing technology is engineered for excellent abrasion resistance.
- Rugged self-adjusting metal seated option is ideally suited for high temperature applications or slurries. Spring load seat maintains constant contact with the ball, giving enhanced sealing performance.
- Shearing action between ball and seal promotes smooth, non-clogging operation perfect for fiber or slurry application.
- Optional PTFE seat insert for low temperature applications.



Triad Process Equipment<sup>®</sup>



triadvalves.com

Copyright 2014, Triad Process Equipment<sup>®</sup> Triad and Triad Process Equipment are registered trademarks. We reserve the right to make technical and or dimensional changes without prior notice.