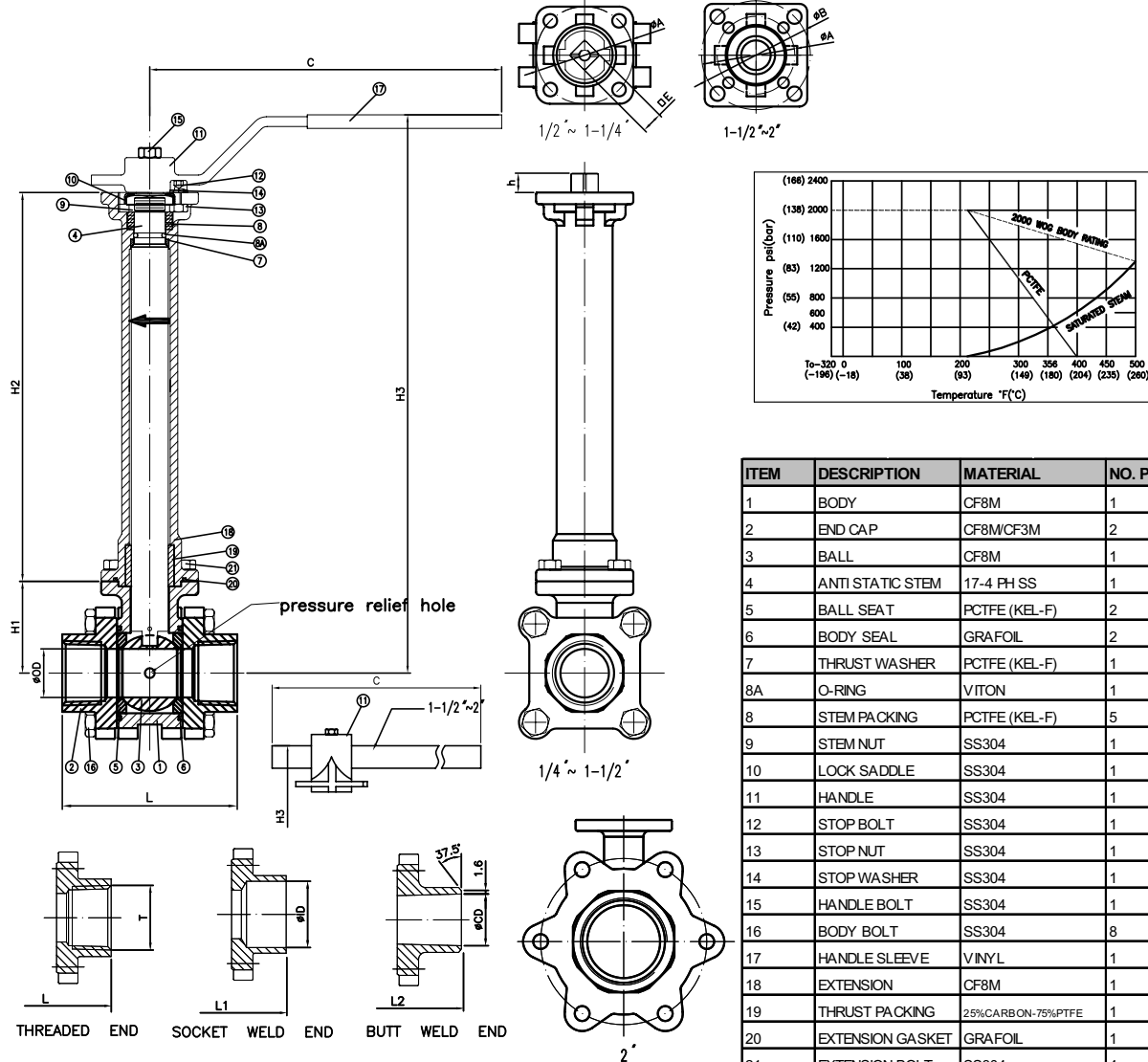




DIMENSIONS AND MATERIAL LIST CRYOGENIC BALL VALVE SERIES 60C (1/4" ~ 2")

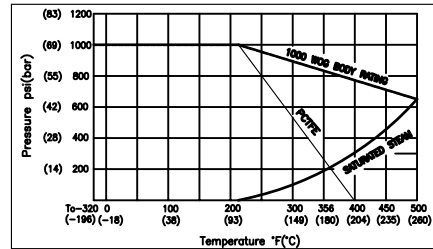
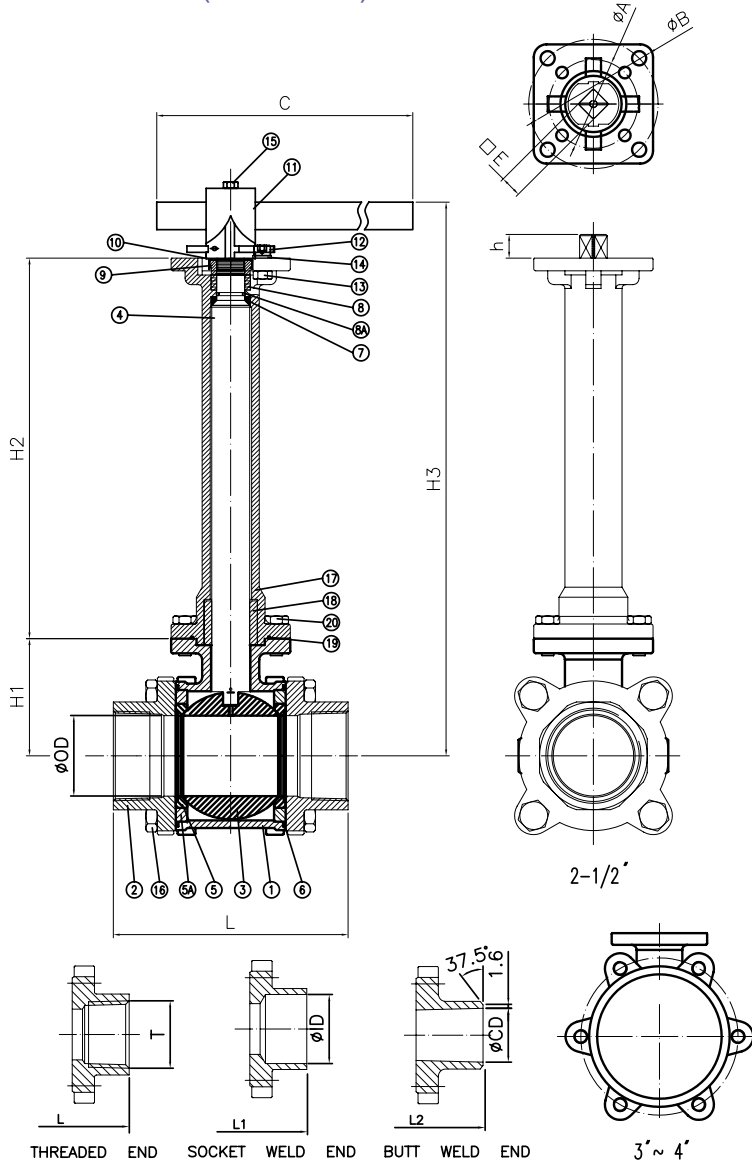


ITEM	DESCRIPTION	MATERIAL	NO. PCS
1	BODY	CF8M	1
2	END CAP	CF8M/CF3M	2
3	BALL	CF8M	1
4	ANTI STATIC STEM	17-4 PH SS	1
5	BALL SEAT	PCTFE (KEL-F)	2
6	BODY SEAL	GRAFOIL	2
7	THRUST WASHER	PCTFE (KEL-F)	1
8A	O-RING	VITON	1
8	STEM PACKING	PCTFE (KEL-F)	5
9	STEM NUT	SS304	1
10	LOCK SADDLE	SS304	1
11	HANDLE	SS304	1
12	STOP BOLT	SS304	1
13	STOP NUT	SS304	1
14	STOP WASHER	SS304	1
15	HANDLE BOLT	SS304	1
16	BODY BOLT	SS304	8
17	HANDLE SLEEVE	VINYL	1
18	EXTENSION	CF8M	1
19	THRUST PACKING	25%CARBON-75%PTFE	1
20	EXTENSION GASKET	GRAFOIL	1
21	EXTENSION BOLT	SS304	4

SIZE	ØOD	ØCD	ØID	T	L	L1	L2	C	?E	ØA	ØB	H1	H2	H3	h
1/4"	0.38	0.41	0.57	NPT PT PF 2999	2.64	2.64	2.64	6.14	0.35	F04	F05	1.54	7.87	10.79	0.31
3/8"	0.38	0.54	0.70		2.64	2.64	2.64	6.14	0.35	F04	F05	1.54	7.87	10.79	0.31
1/2"	0.59	0.62	0.87		2.95	2.95	2.95	6.14	0.35	F04	F05	1.54	7.87	10.79	0.31
3/4"	0.79	0.82	1.08		3.15	3.15	3.54	6.14	0.35	F04	F05	1.68	7.87	10.87	0.31
1"	0.98	1.05	1.34		3.54	3.54	3.94	7.13	0.43	F05	F07	1.86	7.87	11.30	0.39
1-1/4"	1.22	1.38	1.69		4.33	4.33	4.33	7.13	0.43	F05	F07	2.02	7.87	11.50	0.39
1-1/2"	1.50	1.61	1.93		4.72	4.72	4.92	15.55	0.55	F07	F10	2.30	11.81	15.87	0.51
2"	1.97	2.07	2.42	5.51	5.51	5.91	15.55	0.55	F07	F10	3.00	11.81	16.65	0.51	

Triad Process Equipment 4922 Technical Dr. Milford, MI 48381
 248.685.9938 www.triadprocess.com
 Copyright 2013, Triad Process Equipment
 Triad and Triad Process Equipment are registered trademarks.
 We reserve the right to make technical and or dimensional changes without prior notice.

DIMENSIONS AND MATERIAL LIST CRYOGENIC BALL VALVE SERIES 60C (2-1/2" ~ 4")



ITEM	DESCRIPTION	MATERIAL	NO. PCS
1	BODY	CF8M	1
2	END CAP	CF8M	2
3	BALL	CF8M	1
4	ANTI STATIC STEM	17-4 PH SS	1
5	BALL SEAT	PCTFE (KEL-F)	2
5A	BALL SEAT	SS316	2
6	BODY SEAL	GRAFOIL	2
7	THRUST WASHER	PCTFE (KEL-F)	1
8A	O-RING	VITON	1
8	STEM PACKING	PCTFE (KEL-F)	5
9	STEM NUT	SS304	1
10	LOCK SADDLE	SS304	1
11	HANDLE	SS304	1
12	STOP BOLT	SS304	1
13	STOP NUT	SS304	1
14	STOP WASHER	SS304	1
15	HANDLE BOLT	SS304	1
16	BODY BOLT	SS304	8
17	EXTENSION	CF8M	1
18	THRUST PACKING	25%CARBON-75%PTFE	1
19	EXTENSION GASKET	GRAFOIL	1
20	EXTENSION BOLT	SS304	4

SIZE	ØOD	ØCD	ØID	T	L	L1	L2	C	□E	ØA	ØB	H1	H2	H3	h
2-1/2"	2.50	2.59	3.04	NPT PT PF 2999	7.28	7.28	7.48	11.61	0.67	F07	F10	3.64	11.85	17.24	0.75
3"	2.99	3.07	3.54		8.07	8.07	8.66	11.61	0.67	F07	F10	4.01	11.85	17.64	0.75
4"	3.82	4.03	4.54		9.45	9.45	10.63	19.49	0.87	F07	F10	4.86	11.85	18.46	0.83