

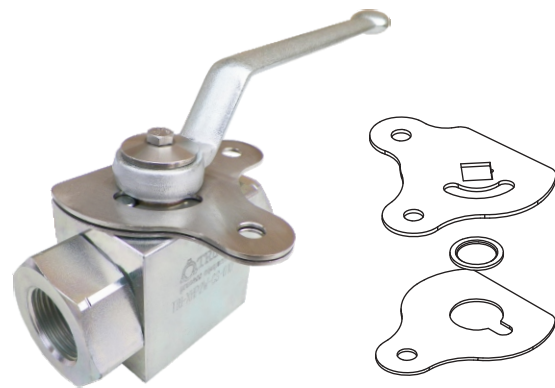
Series XHP Ball Valves



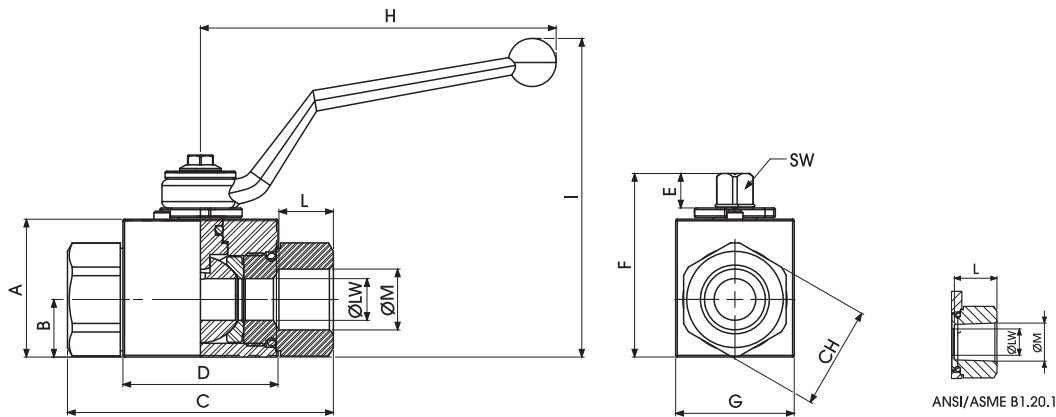
2-Way High Pressure

Specifications:

- End Type: NPT
- Pressure rating:
7252 PSI 1/8" to 1/2"
5802 PSI 3/4"
5076 PSI 1"
- Temperature: -4°F to 212°F (Carbon Steel)
-76°F to 446°F (Stainless Steel)
- **NPT thread standard**
- **Optional DIN, SAE and BSP threads available**



Locking Kits available upon request



Dimensions

SIZE	A	B	C	D	E	F	G	H	I	L	ØM	CH	SW	ØLW	LBS.
1/8"	1.38	0.57	2.80	1.67	0.43	1.93	1.18	4.33	3.60	0.43	1/8	0.94	0.35	0.16	1
1/4"	1.38	0.57	2.80	1.67	0.43	1.93	1.18	4.33	3.60	0.67	1/4	0.94	0.35	0.24	1
1/2"	1.69	0.71	3.27	1.91	0.43	2.24	1.46	4.33	3.92	0.83	1/2	1.26	0.35	0.51	2
3/4"	2.24	0.92	3.74	2.46	0.55	2.89	1.93	7.09	4.19	0.83	3/4	1.61	0.55	0.79	3
1"	2.56	1.16	4.41	2.62	0.55	3.29	2.17	7.09	4.59	0.94	1	1.97	0.55	0.98	5

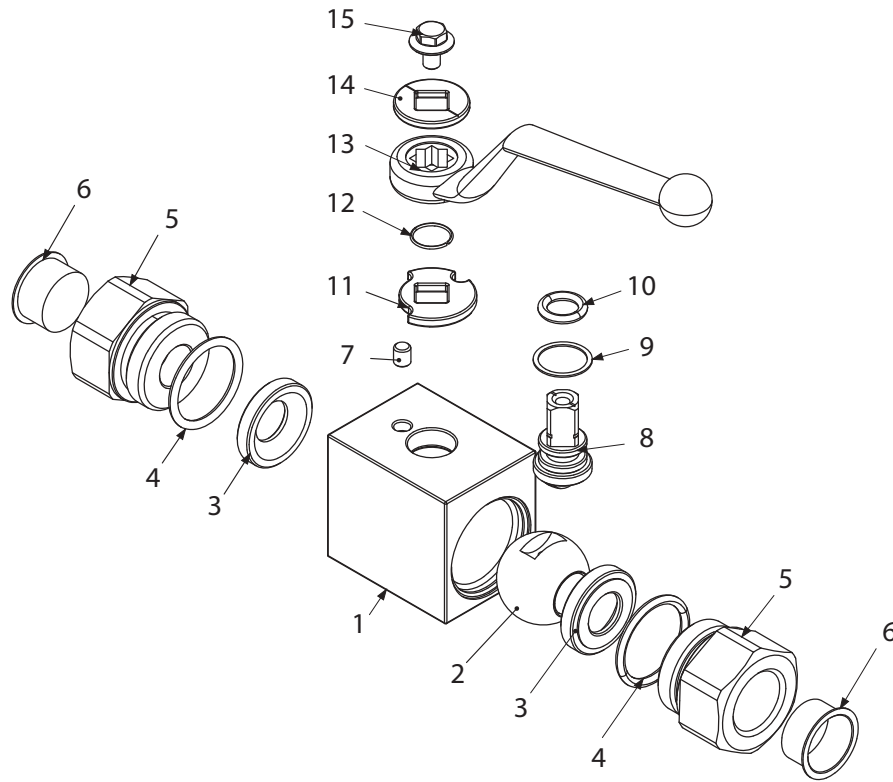
Copyright 2016, Triad Process Equipment® Triad and Triad Process Equipment are registered trademarks. We reserve the right to make technical and or dimensional changes without prior notice.

Series XHP Ball Valves



MATERIAL LIST

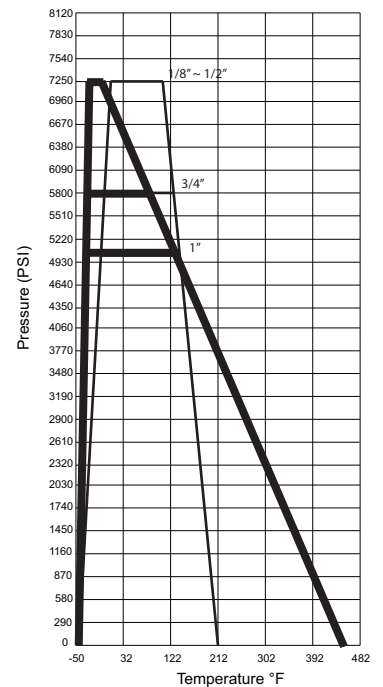
2-Way High Pressure



MATERIAL LIST

NO	PART NAME	MATERIAL		NO. PCS.
		CS	SS	
1	BODY	CS	SS	1
2	BALL	CS	SS	1
3	BALL SEAT	POM		2
4	ADAPTER O-RING	NBR		2
5	ADAPTER	CS	SS	2
6	CAPS	PVC		2
7	STOP	CS	SS	1
8	STEM O-RING	CS	SS	1
9	STEM RING	POM		1
10	STEM O-RING	NBR		1
11	WASHER	CS	SS	1
12	SNAP RING	SS		1
13	HANDLE	ZINC		1
14	WASHER	CS	SS	1
15	SCREW	DN 6921 8.8		1

PRESSURE TEMPERATURE RATINGS



Copyright 2016, Triad Process Equipment® Triad and Triad Process Equipment are registered trademarks. We reserve the right to make technical and or dimensional changes without prior notice.