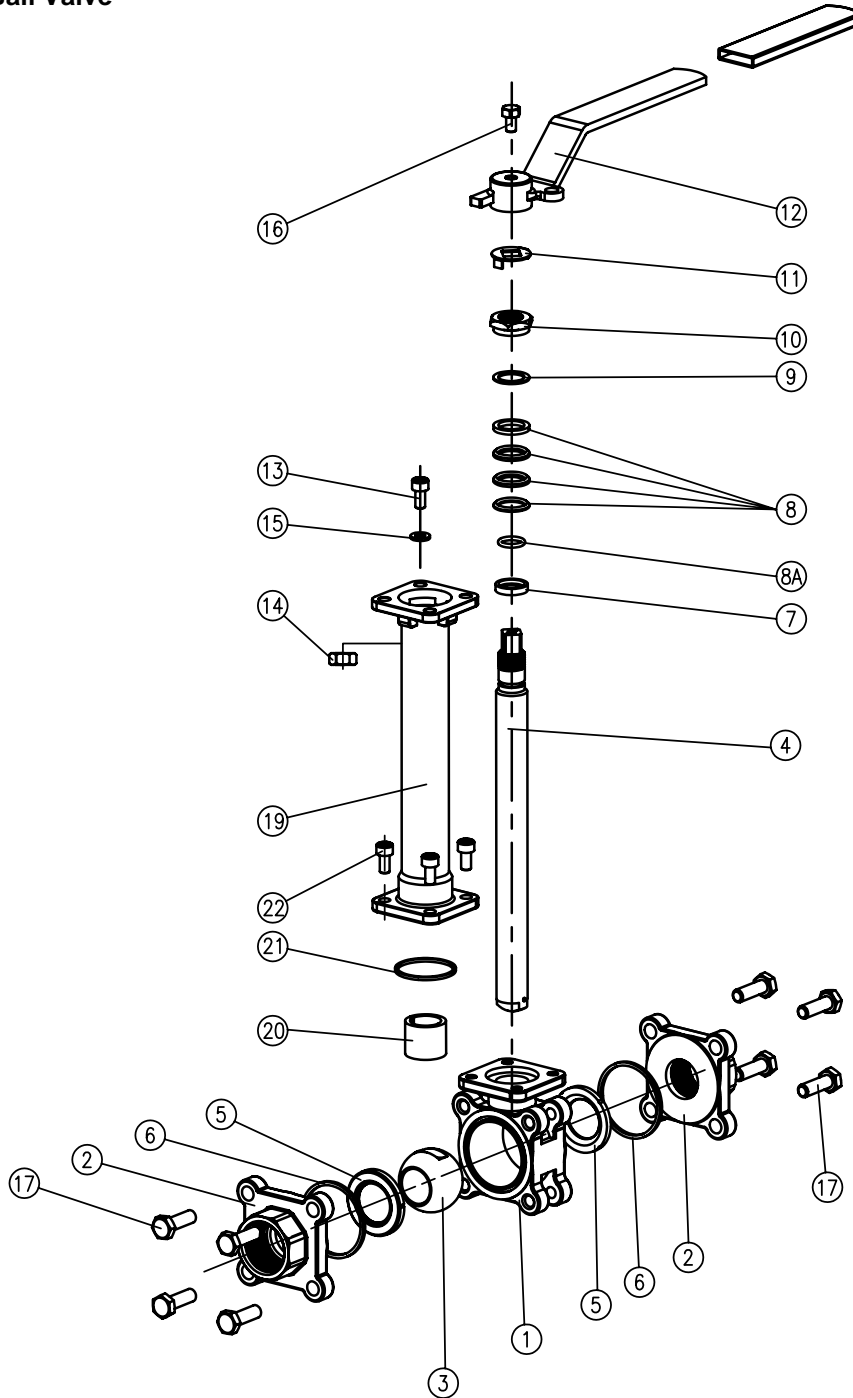


INSTALLATION & MAINTENANCE MANUAL

SERIES 60C / 70C / 80C

Cryogenic Ball Valve

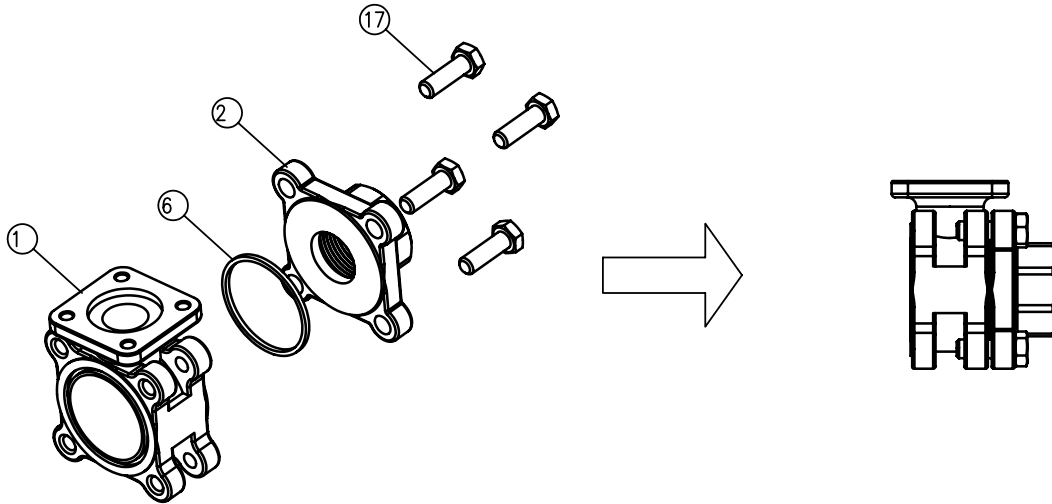


Step 1
(Completed assembly drawing)

INSTALLATION & MAINTENANCE MANUAL

SERIES 60C / 70C / 80C

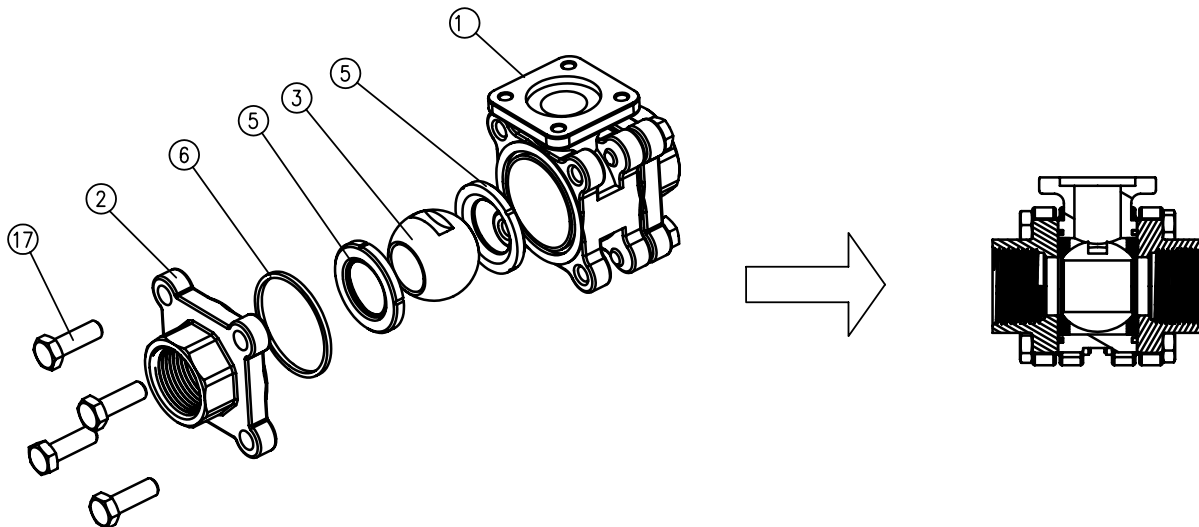
Cryogenic Ball Valve



Step 2

(Assembly drawing for one side)

Install parts (6) and (2) in valve body (1) and tighten screw (17).



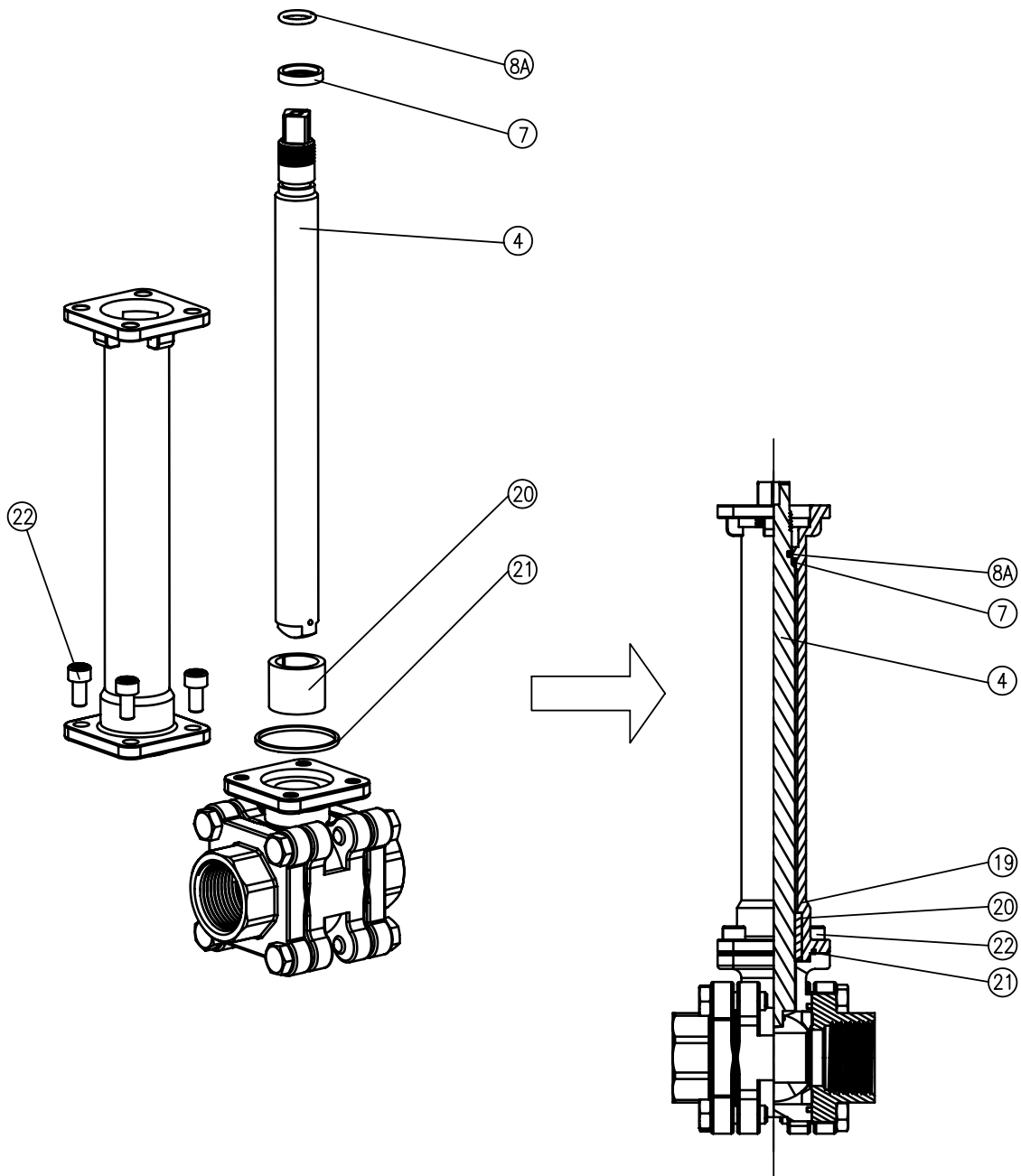
Step 3

Put parts (5) & (3) into valve body (1) and assemble parts (6), (2) & (17) as noted in Step 2.

INSTALLATION & MAINTENANCE MANUAL

SERIES 60C / 70C / 80C

Cryogenic Ball Valve



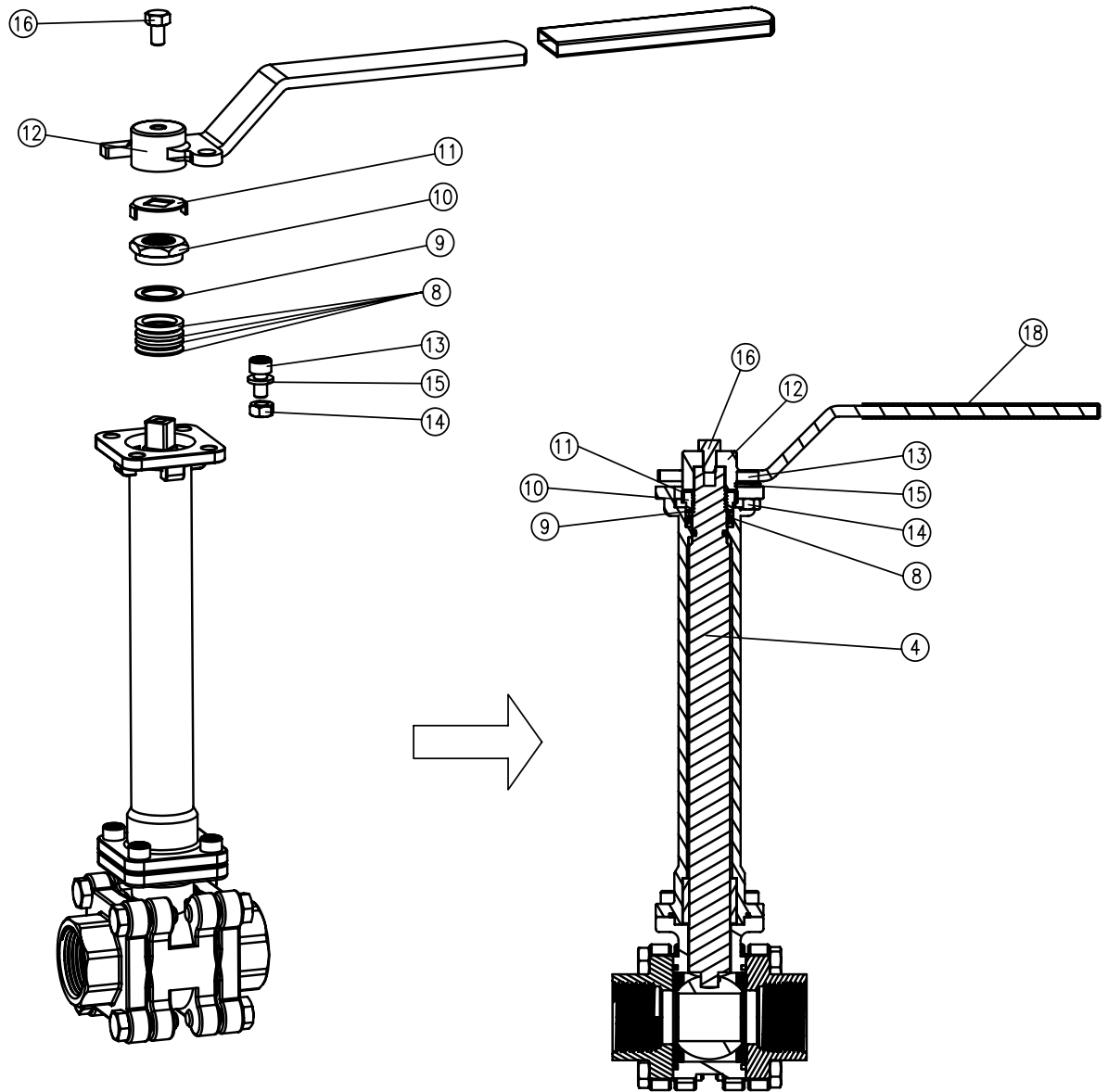
Step 4

Put parts (7) & (8A) into stem (4). Put the stem into part (19), set up (20) & (21) in correct position and tighten part (22).

INSTALLATION & MAINTENANCE MANUAL

SERIES 60C / 70C / 80C

Cryogenic Ball Valve



Step 5

Put parts (8) & (9) into stem (4) and tighten (10) properly. Make sure that the lock saddle (11) is properly seated at the side of the hexagon nut. Assemble parts (12), (16), (18), (15), (13) & (14) accordingly. Check that the direction for open-close is located in the correct position.