

SERIES 22D

STAINLESS STEEL DIRECT MOUNT BALL VALVE
 1000 WOG - FULL PORT - NPT ENDS

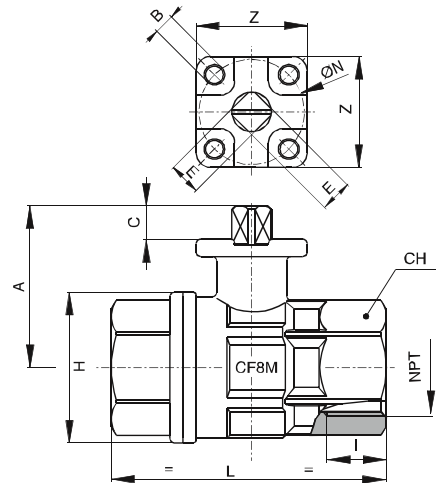
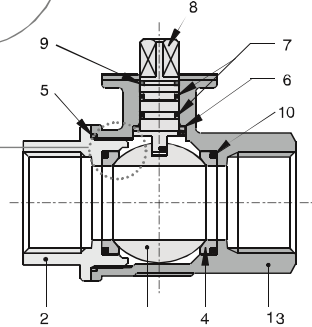
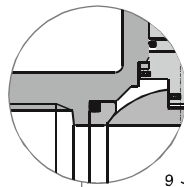
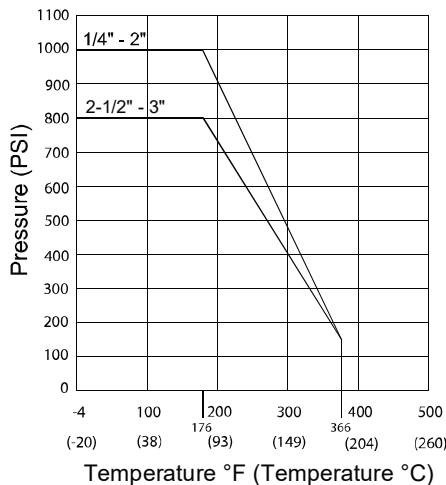


SPECIFICATIONS:

- Two Piece Stainless Steel ASTM A351 - CF8M
- End Type: NPT
- Pressure Rating: 1000 WOG / 800 WOG (2-1/2" ~ 3")
- Temperature: to 366°F
- Blow-out proof stem design
- ISO 5211 Top Flange for Direct Mounting
- PTFE seats with O-RING backing for low operating torque
- PTFE seals and double O-RING stem packing
- Complies with NACE MR 0175 & NACE MR 0103

Materials List

NO	PART NAME	MATERIAL	NO. PCS.
1	BODY	CF8M	1
2	END CONNECTION	CF8M	1
3	BALL	AISI 316 - CF8M	1
4	BALL SEAT	PTFE	2
5	SEAT	PTFE	1
6	STEM SEAL	PTFE	1
7	O-RING	FKM (VITON)	2
8	STEM SEAL	AISI 316	1
9	STEM SEAT	PTFE	1
10	O-RING	FKM (VITON)	2



Dimensions (in.)

SIZE	I	L	H	CH	A	C	E	ØN	B	Z	Cv	WEIGHT (lbs.)
1/4"	0.59	2.56	1.44	1.02	1.78	0.26	0.35	1.42/1.65 (F03/F04)	0.24	1.65	7.91	0.95
3/8"	0.59	2.56	1.44	1.02	1.78	0.26	0.35	1.42/1.65 (F03/F04)	0.24	1.65	10.22	0.89
1/2"	0.59	2.63	1.35	1.06	1.63	0.35	0.35	1.42 (ISO F03)	0.23	1.49	18.90	0.68
3/4"	0.64	3.07	1.65	1.25	1.71	0.35	0.35	1.42 (ISO F03)	0.23	1.49	34.22	0.91
1"	0.75	3.54	2.02	1.61	2.1	0.35	0.35	1.42 (ISO F03)	0.23	1.49	49.88	1.35
1-1/4"	0.84	3.93	2.53	1.96	2.24	0.35	0.35	1.42 (ISO F03)	0.23	1.49	103.24	2.22
1-1/2"	0.84	4.40	3.03	2.16	2.91	0.43	0.43	1.97 (ISO F05)	0.27	1.96	266.80	3.69
2"	1.01	5.31	3.81	2.75	3.27	0.43	0.43	1.97 (ISO F05)	0.27	1.96	307.40	6.49
2-1/2"	1.22	6.32	4.64	3.39	4.94	0.66	0.67	2.76/4.02 (ISO F07/F10)	0.39/0.47	4.02	322.20	16.38
3"	1.34	7.01	5.48	4.09	5.34	0.71	0.67	2.76/4.02 (ISO F07/F10)	0.39/0.47	4.02	584.44	22.82