

# SERIES 50D

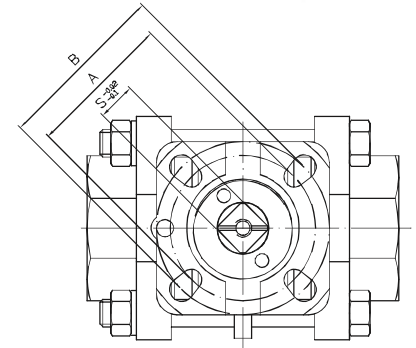
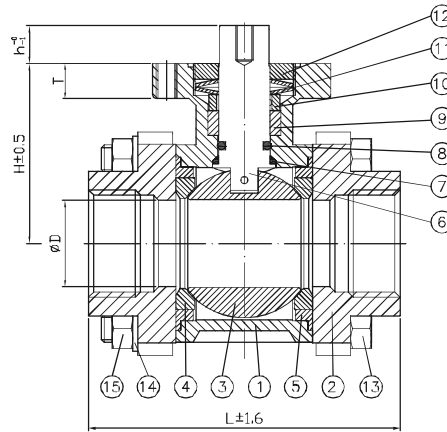
STAINLESS STEEL DIRECT MOUNT BALL VALVE

1000 WOG - FULL PORT - NPT - SOCKET WELD & BUTT WELD ENDS

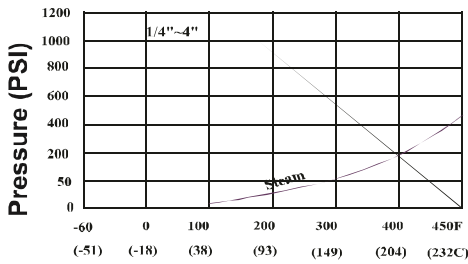


**Specifications:**

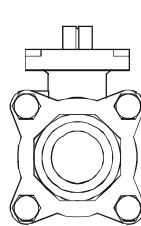
- Three Piece
- End Type: NPT, Socket Weld & Butt Weld
- Pressure rating: 1000 WOG
- Temperature: -60°F to 450°F
- Blow-out proof stem design
- ISO 5211 Top Flange for Direct Mounting
- Tested and certified to the API 598 standard



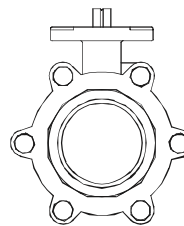
**Pressure Temperature Ratings**



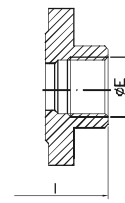
Temperature °F (°C)



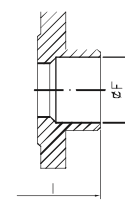
1/4" ~ 2-1/2"



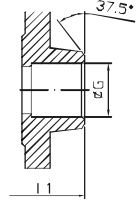
3" ~ 4"



NPT



Socket Weld



Butt Weld

**Materials List**

NO	PART NAME	MATERIAL	NO. PCS.
1	BODY	ASTMA351 - CF8M	1
2	CAP	ASTMA351 - CF8M	2
3	BALL	ASTMA351 - CF8M	1
4	SEAT	RPTFE	2
5	BODY GASKET	PTFE	2
6	STEM	SS316	1
7	STEM SEAL	PTFE	1
8	O-RING	VITON	1
9	STEM PACKING	PTFE	1
10	GLAND	SS304	1
11	BELLEVILLE WASHER	SS301	2
12	DISC PLATE	SS304	1
13	BODY BOLT	SS304	4
14	WASHER	SS304	4
15	NUT	SS304	4

**Dimensions (in.)**

SIZE	ØD	ØE	ØF	ØG	L	L1	T	A	B	H	h	S	Weight (lbs.)
1/4"	0.45	0.54	0.57	0.41	2.56	2.76	0.35	F03	F04	1.65	0.28	0.35	1.32
3/8"	0.50	0.54	0.69	0.54	2.56	2.76	0.35	F03	F04	1.65	0.28	0.35	1.28
1/2"	0.59	0.69	0.87	0.59	2.95	2.95	0.35	F03	F04	1.65	0.28	0.35	1.41
3/4"	0.79	0.79	1.08	0.84	3.15	3.54	0.35	F03	F04	1.77	0.31	0.35	1.76
1"	0.98	0.71	1.34	1.07	3.54	3.94	0.39	F04	F05	2.05	0.43	0.43	3.09
1-1/4"	1.26	0.93	1.69	1.40	4.33	4.33	0.39	F04	F05	2.24	0.43	0.43	4.14
1-1/2"	1.50	0.93	1.93	1.62	4.72	4.92	0.51	F05	F07	2.68	0.55	0.55	6.61
2"	1.97	0.96	2.42	2.07	5.51	5.91	0.51	F05	F07	3.03	0.55	0.55	10.03
2-1/2"	2.50	1.35	3.04	2.57	7.28	7.48	0.51	F07	F10	3.90	0.67	0.67	20.19
3"	3.15	1.44	3.54	3.07	8.07	8.66	0.51	F07	F10	4.37	0.67	0.67	30.42
4"	3.82	1.75	4.54	4.03	9.45	10.63	0.65	F10	F12	5.55	0.87	0.87	48.72