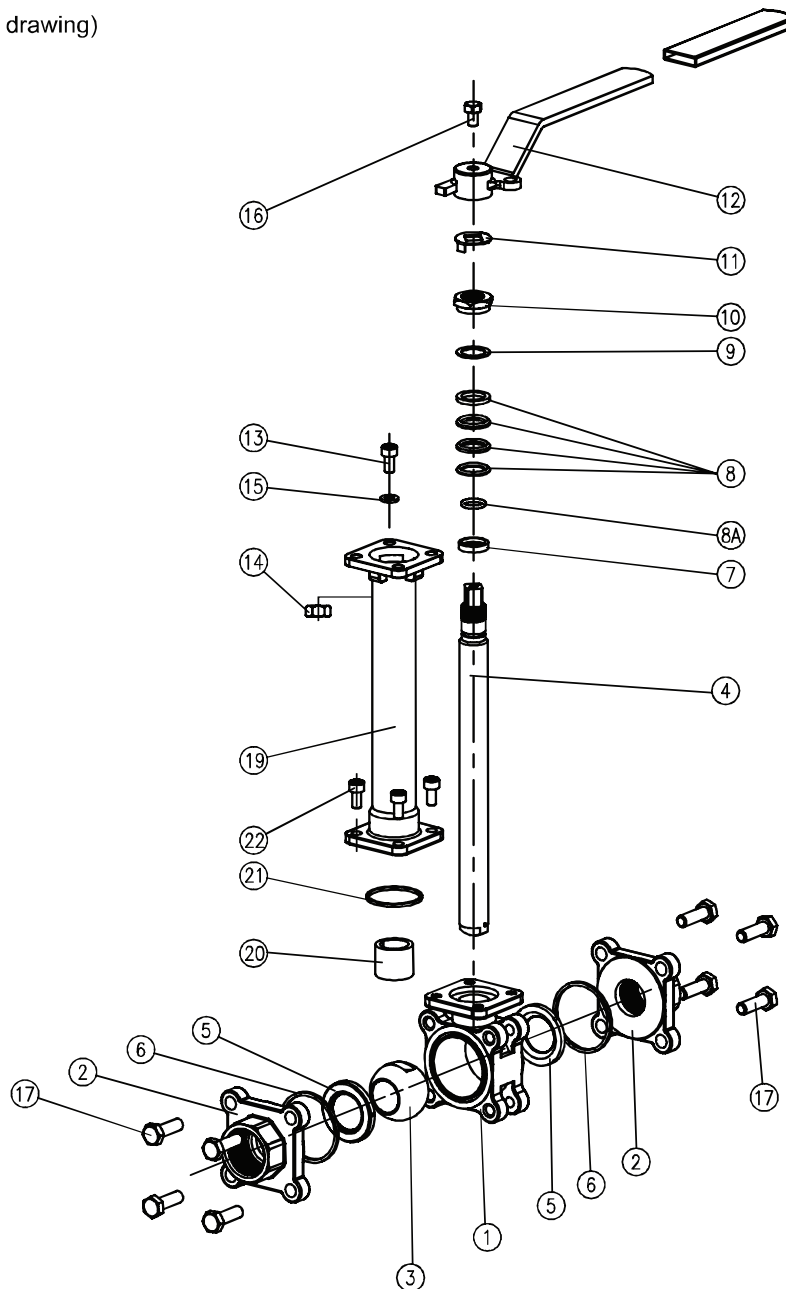


INSTALLATION & MAINTENANCE MANUAL
TRIAD - SERIES 60C / 70C / 80C
CRYOGENIC BALL VALVES



Step 1
(Completed assembly drawing)



INSTALLATION & MAINTENANCE MANUAL

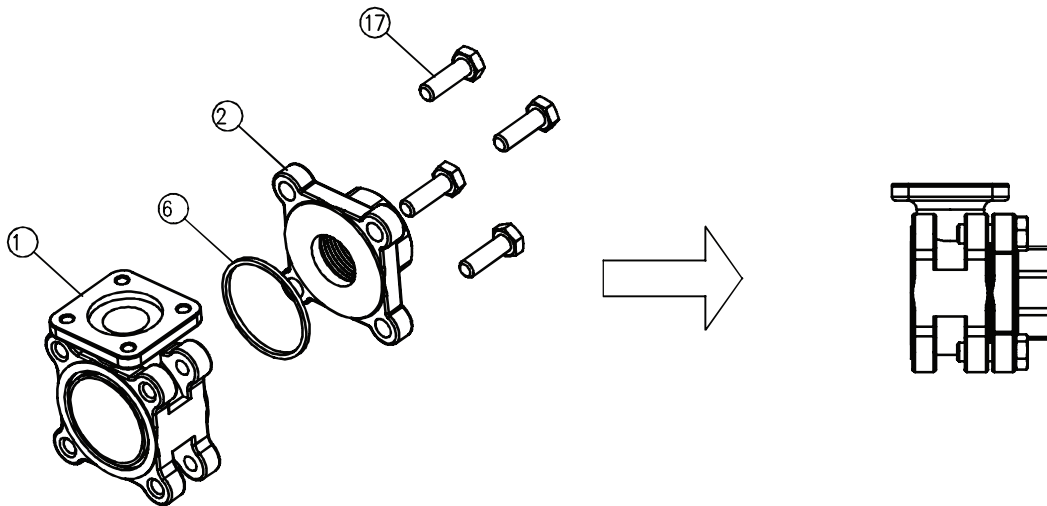
TRIAD - SERIES 60C / 70C / 80C

CRYOGENIC BALL VALVES

Step 2

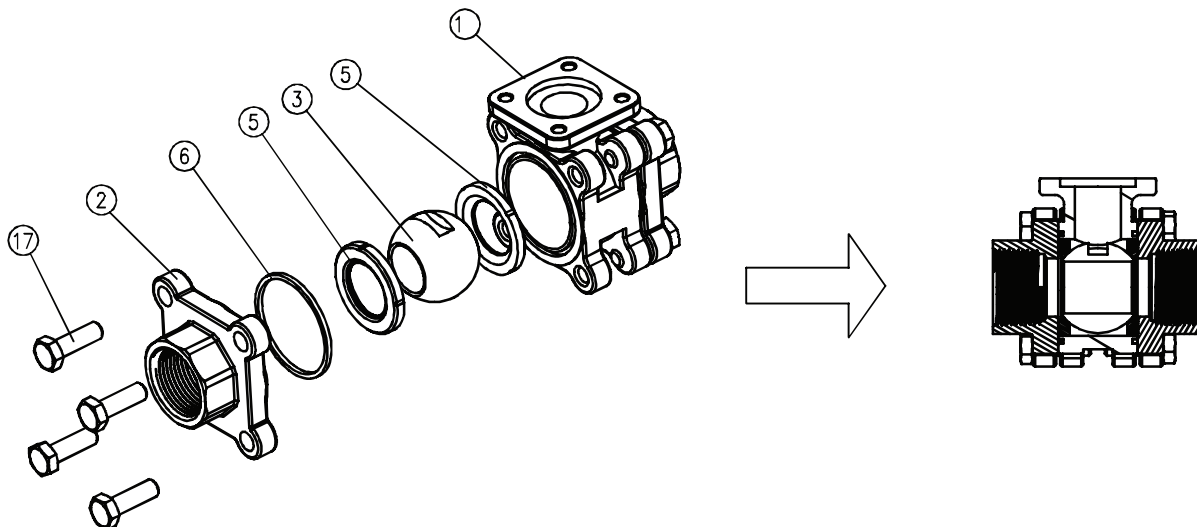
(Assembly drawing for one side)

Install parts (6) and (2) in valve body (1) and tighten screw (17).



Step 3

Put parts (5) & (3) into valve body (1) and assemble parts (6), (2) & (17) as noted in Step 2.



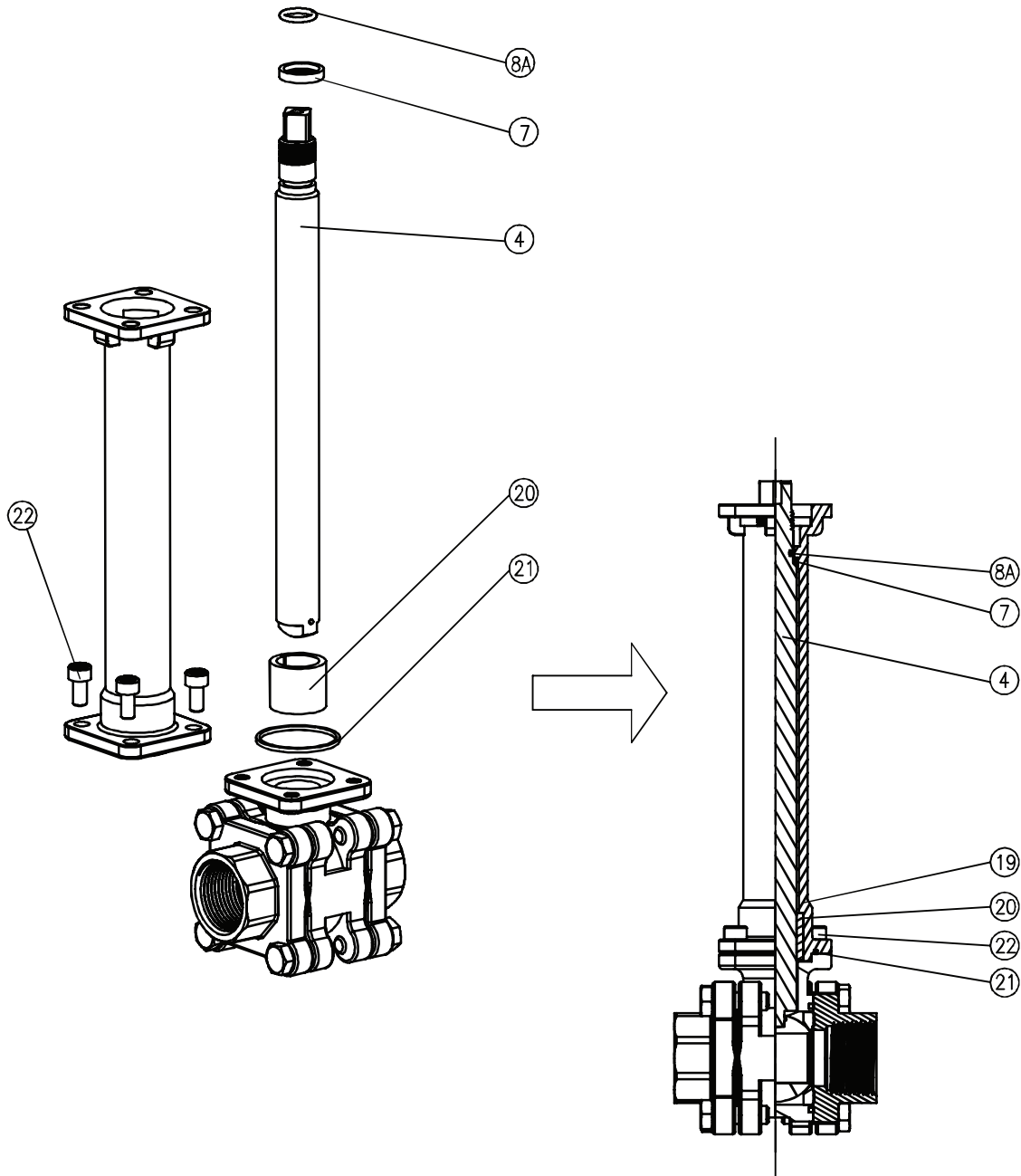
INSTALLATION & MAINTENANCE MANUAL

TRIAD - SERIES 60C / 70C / 80C

CRYOGENIC BALL VALVES

Step 4

Put parts (7) & (8A) into stem (4). Put the stem into part (19), set up (20) & (21) in correct position and tighten part (22).



INSTALLATION & MAINTENANCE MANUAL

TRIAD - SERIES 60C / 70C / 80C

CRYOGENIC BALL VALVES

Step 5

Put parts (8) & (9) into stem (4) and tighten (10) properly. Make sure that the lock saddle (11) is properly seated at the side of the hexagon nut. Assemble parts (12), (16), (18), (15), (13) & (14) accordingly. Check that the direction for open-close is located in the correct position.

