

SERIES 66

FIRE SAFE BALL VALVES



Features:

- Investment Cast Body Construction
- ISO 5211 Direct Mounting Flange
- 3 Pieces Body Design with 8 Bolts
- In-Line Maintenance
- Blow-Out-Proof Stem Design & Anti-Static Device
- Available for Pneumatic or Electric Actuator
- NACE MR0175 is available upon request
- Super Alloy materials for highly corrosive medium are available upon request

Specifications:

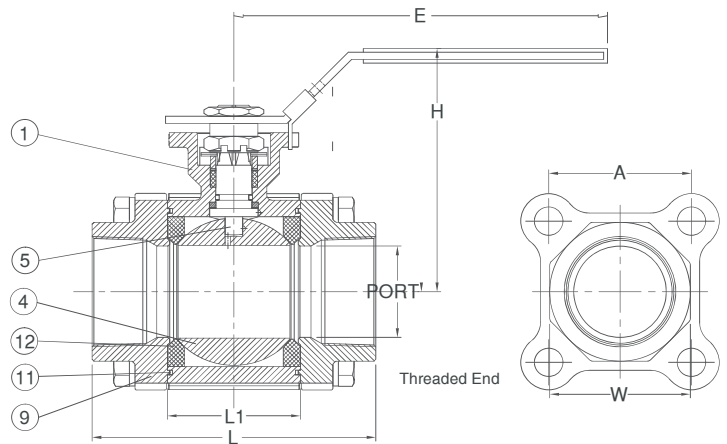
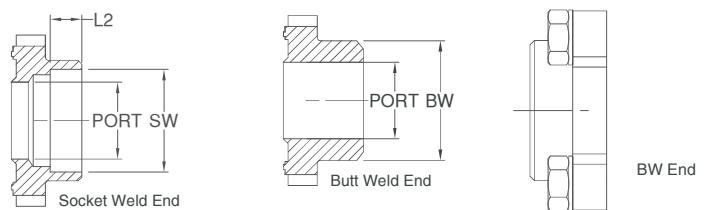
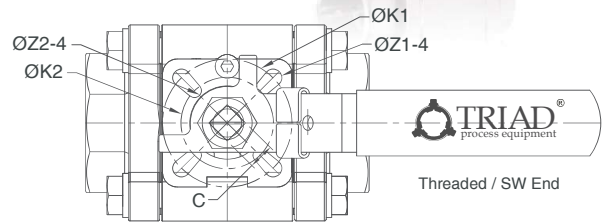
- Size Range 1/4" ~ 2" (DN8 ~ DN50)
- End Connection Threaded / Socket / Butt Weld Ends
- Working Pressure 2000 PSI (CWP) for 1/4" ~ 1"
1500 PSI (CWP) for 1-1/4" ~ 2"
1000 PSI (CWP) for 2-1/2" ~ 4"
- Steam Pressure 150 PSIG. Saturated Steam for RTFE.
- Temperature Range -4 to 356 °F (-20 to 180 °C) for RTFE

Standards:

- Design ASME/ANSI B16.34
- Mounting Flange ISO 5211
- Threaded End NPT/ BS 21 (BSP) / BSPT / ISO 228-1/ DIN 2999 / ISO 7-1Rp
- Socket Weld End ASME/ANSI B16.11
- Butt Weld End ASME/ANSI B16.25
- Face to Face MFG
- Material ASTM
- Pressure Testing API 598

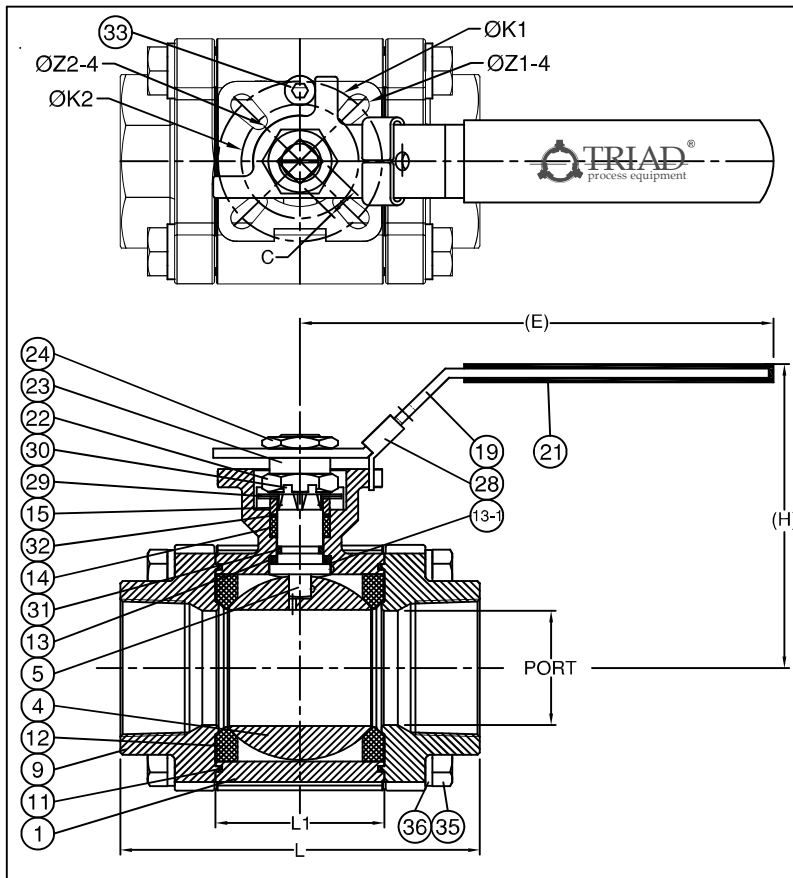
Certifications:

- Fire Safe API 607 6th Edition / ISO 10497
- Fugitive Emission ISO 15848-1 & TA-LUFT
- Quality Assurance ISO 9001
- Material Certificate EN 10204-3.1 MTR
- CE Approval PED 2014/68/EU Module H
- Canadian Certificate CRN



CRN
CERTIFICATED

MATERIALS AND DIMENSIONS CHART: TRIAD 66 SERIES - FIRE SAFE VALVE



MODEL: 66 SERIES

MATERIAL LIST

NO.	PART NAME	MATERIAL
1	BODY	ASTM A351 Gr.CF8M
4	BALL	ASTM A351 Gr.CF8M
5	STEM (ANTI STATIC)	SS316
9	END CAP	ASTM A351 Gr.CF8M
11	BODY SEAL	GRAPHITE
12	SEAT	RTFE
13	THRUST WASHER	GRAPHITE
13-1	THRUST WASHER	RTFE
14	STEM PACKING	GRAPHITE
15	GLAND BUSH	SS304
19	HANDLE	SS304
21	HANDLE COVER	PLASTIC
22	STEM NUT	SS304
23	HANDLE WASHER	SS304
24	HANDLE NUT	SS304
28	LOCKING DEVICE	SS304
29	BELLEVILLE WASHER	SS301
30	TAB WASHER	SS304
31	O-RING	VITON
32	PACKING FOLLOWER	RTFE
33	STOP PIN	SS304
35	BODY BOLT	SS304
36	BOLT WASHER	SS304

WORKING PRESSURE:

1/4"-1" 2000psi

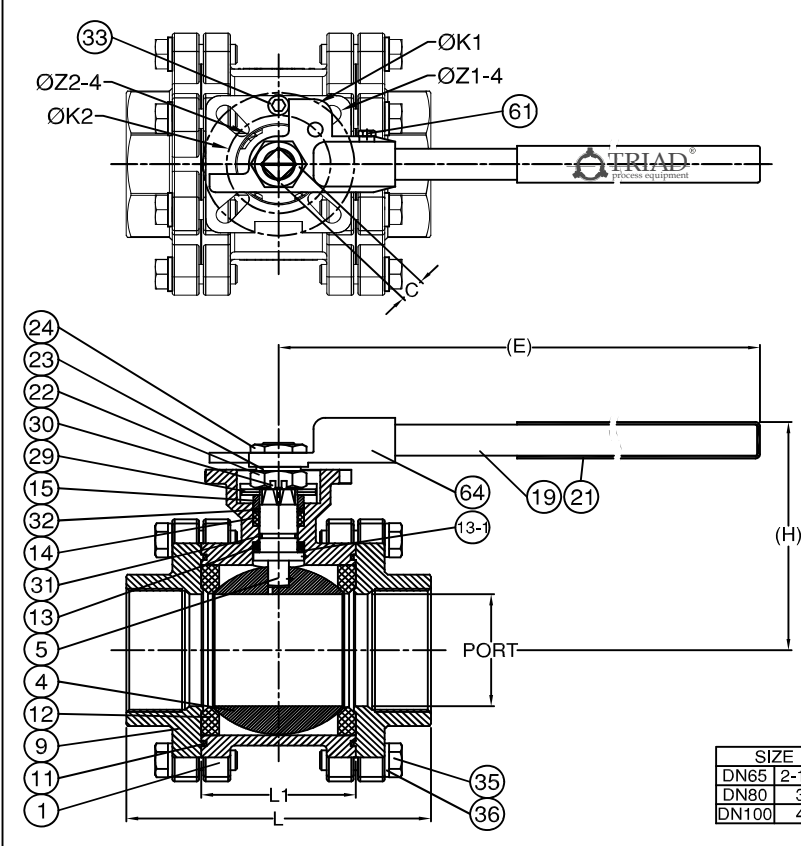
1/4"-2" 1500psi

DIMENSIONS

unit:inch

SIZE	PORT	L	L1	E	H	C	ØK1	ØK2	ØZ1-4	ØZ2-4	
DN8	1/4"	0.393	2.708	1.000	5.157	2.795	0.354	1.653	1.417	0.236	0.236
DN10	3/8"	0.393	2.708	1.000	5.157	2.795	0.354	1.653	1.417	0.236	0.236
DN15	1/2"	0.590	2.854	1.000	5.157	2.795	0.354	1.653	1.417	0.236	0.236
DN20	3/4"	0.787	3.314	1.236	5.157	2.913	0.354	1.653	1.417	0.236	0.236
DN25	1"	0.984	4.145	1.625	6.496	3.740	0.433	1.968	1.653	0.275	0.236
DN32	1-1/4"	1.259	4.370	1.905	6.496	3.740	0.433	1.968	1.653	0.275	0.236
DN40	1-1/2"	1.496	5.011	2.216	7.874	4.881	0.551	2.755	1.968	0.374	0.295
DN50	2"	1.968	6.039	2.834	7.874	5.236	0.551	2.755	1.968	0.374	0.295

MATERIALS AND DIMENSIONS CHART:
TRIAD 66 SERIES - FIRE SAFE VALVE



Technical drawing of the TRIAD 66 Series Fire Safe Valve. The drawing includes a front view (top) and a side view (bottom). The front view shows the valve body with callouts for dimensions ØK1, ØZ1-4, ØZ2-4, and ØK2. The side view shows the handle assembly with callouts for parts 1 through 36. Dimensions L, L1, E, H, and C are indicated. The word 'PORT' is labeled on the side view.

MODEL: 66 Series

MATERIAL LIST

NO.	PART NAME	MATERIAL
1	BODY	ASTM A351 Gr.CF8M
4	BALL	ASTM A351 Gr.CF8M
5	STEM (ANTI STATIC)	SS316
9	END CAP	ASTM A351 Gr.CF8M
11	BODY SEAL	GRAPHITE
12	SEAT	RTFE
13	THRUST WASHER	GRAPHITE
13-1	THRUST WASHER	RTFE
14	STEM PACKING	GRAPHITE
15	GLAND BUSH	SS304
19	HANDLE	SS304
21	HANDLE COVER	PLASTIC
22	STEM NUT	SS304
23	HANDLE WASHER	SS304
24	HANDLE NUT	SS304
29	BELLEVILLE WASHER	SS301
30	TAB WASHER	SS304
31	O-RING	VITON
32	PACKING FOLLOWER	RTFE
33	STOP PIN	SS304
35	BODY BOLT	SS304
36	BOLT WASHER	SS304
61	HEX SCREW	SS304
64	HANDLE HUB	ASTM A351 Gr.CF8

WORKING PRESSURE:
2 1/4" - 4" 1000psi

DIMENSIONS unit:inch

SIZE	PORT	L	L1	E	H	C	ØK1	ØK2	ØZ1-4	ØZ2-4	
DN65	2-1/2"	2.559	7.283	3.425	15.35	5.905	0.669	4.015	2.755	0.472	0.393
DN80	3"	3.149	8.070	4.094	15.35	6.299	0.669	4.015	2.755	0.472	0.393
DN100	4"	3.937	9.448	4.842	15.74	7.086	0.748	4.015	2.755	0.472	0.393