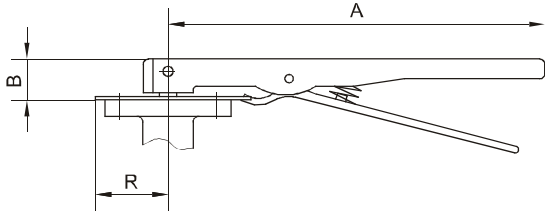




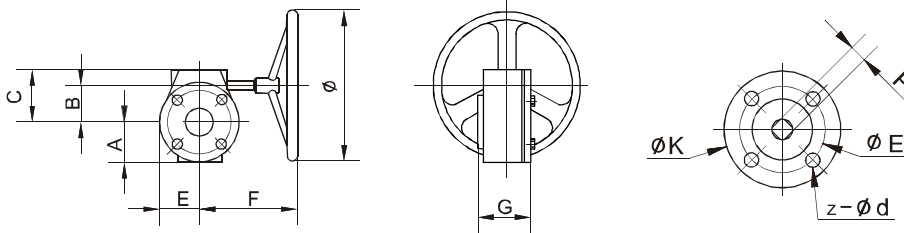
## LEVER & GEAR DATA SHEET BUTTERFLY VALVE 2" – 36" SERIES 700

### Overall Dimensions & Weight of Lever



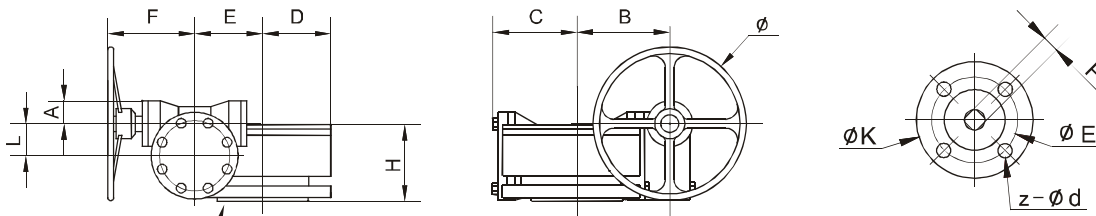
TYPE	SIZE	A	B	R	WEIGHT (lbs.)
TRI-700-2-6-LH	2" - 6"	10.63	1.26	2.05	1.98
TRI-700-8-LH	8"	14.17	1.77	2.96	4.30
TRI-700-10-12-LH	10" - 12"	19.69	1.77	2.96	5.84

### Overall Dimensions & Weight of Worm Gear Actuator



TYPE	RATED OUTPUT (INCH lbs.)	MAXIMUM OUTPUT (INCH lbs.)	RATIO	BUTTERFLY VALVE SIZE	A	B	C	E	ØE	F	G	Ø	ØK	P	z-Ød	WEIGHT (lbs.)
TRI-700-2-3-GO	1328	2390	24:1	2" - 3"	2.05	1.77	2.91	1.97	F07	6.00	2.95	5.91	3.03	0.35	4 - M6 - 1.0	11.46
TRI-700-4-GO	1328	2390	24:1	4"	2.05	1.77	2.91	2.75	F07	6.00	2.95	5.91	3.54	0.43	4 - M8 - 1.25	11.46
TRI-700-5-6-GO	1328	2390	24:1	5" - 6"	2.05	1.77	2.91	2.75	F07	6.00	2.95	5.91	3.54	0.55	4 - M8 - 1.25	11.46
TRI-700-8-GO	4425	6196	30:1	8"	2.95	2.47	3.98	4.01	F10	9.84	3.39	11.81	4.92	0.67	4 - M10 - 1.50	28.66
TRI-700-10-GO	4425	6196	30:1	10"	2.95	2.47	3.98	4.01	F10	9.84	3.39	11.81	4.92	0.87	4 - M10 - 1.50	28.66
TRI-700-12-GO	8851	10621	50:1	12"	3.19	3.15	4.65	4.01	F10	8.94	3.27	11.81	5.51	0.87	4 - M10 - 1.50	33.07
TRI-700-14-GO	8851	10621	50:1	14"	3.19	3.15	4.65	4.01	F10	8.94	3.27	11.81	5.51	0.87	4 - M10 - 1.50	33.07

### Overall Dimensions & Weight of Double-Stage Worm Gear Actuator



ISO 5211 mating ring (slight elevation in the casting) Consult factory for exact dimensions

TYPE	RATED OUTPUT (INCH lbs.)	MAXIMUM OUTPUT (INCH lbs.)	RATIO	BUTTERFLY VALVE SIZE	A	B	C	D	E	ØE	F	H	ØK	L	P	Ø	z-Ød	WEIGHT (lbs.)
TRI-700-16-18-GP	22127	26552	560:1	16" - 18"	2.22	7.03	4.76	4.53	5.51	F14	6.85	4.94	7.76	2.60	1.06	11.81	4 - M16 - 2.0	125.44
TRI-700-20-GP	22127	26552	560:1	20"	2.22	7.03	4.76	4.53	5.51	F14	6.85	4.94	7.76	2.60	1.42	11.81	4 - M16 - 2.0	125.44
TRI-700-24-GO	35403	46024	640:1	24"	2.22	7.78	5.59	5.67	6.50	F16	6.85	5.73	10.87	2.60	1.42	11.81	4 - M20 - 2.5	159.55
TRI-700-28-32-GO	70806	75231	704:1	28" - 32"	2.64	9.61	7.20	7.44	10	F25	6.50	6.18	11.81	3.46	-	15.75	8 - M16 - 2.0	279.99
TRI-700-36-GO	132761	159313	704:1	36" - 40"	2.99	10.63	8.46	8.66	10	F25	8.46	9.25	11.81	4.96	-	11.81	8 - M16 - 2.0	348.33

Triad Process Equipment 4922 Technical Dr. Milford, MI 48381  
248.685.9938 www.triadprocess.com  
Copyright 2005, Triad Process Equipment  
Triad and Triad Process Equipment are registered trademarks.  
We reserve the right to make technical and or dimensional changes without prior notice.