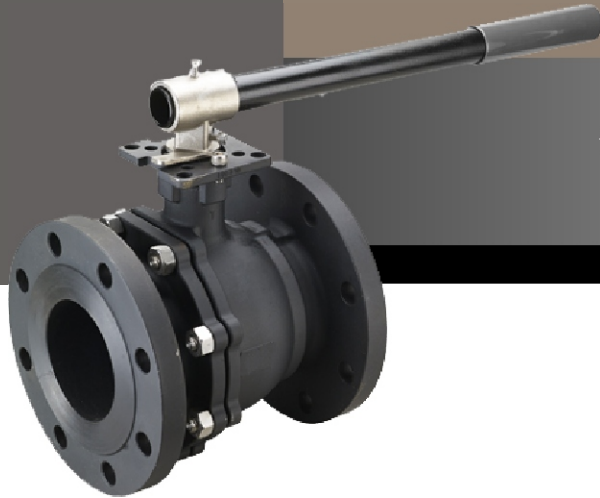


# Chlorine Service Ball Valves

**66C/9150C/9300C**



AVAILABLE IN NPT AND 150/300#  
RAISED FACE FLANGE.

Due to both the hazardous nature of chlorine and its very high expansion rate Triad offers a specially prepared version of its popular 66, 9150 and 9300 series of ball valves.

Manufactured and tested in accordance with The Chlorine Institute publication: Pamphlet 6 (Piping Systems For Dry Chlorine).

**Valves Feature:**

- WCB body
- Either Monel or Hastelloy C\* ball and stem.
- Vent hole in ball
- Arrow casted in body for flow direction.

\*Hastelloy C has a greater corrosion resistance in dry chlorine with high moisture content.

**V Ball Options**

The Triad V Ball provides unlimited control options for all process applications. For more information please request the Triad V Ball Control Valves data sheet.

**SPECIFICATIONS**

**9150 & 9300 Series**

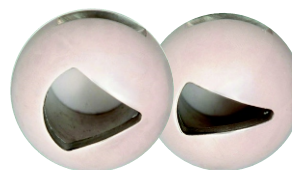
Inspection and Test: API 598

- Compliance: ANSI B16.34, ANSI B16.5, ANSI B16.10
- Standards: ISO 5211, DIN 3337, DIN 3202, DIN 2501, MSS Sp55

**66 Series**

- Inspection and Test: API 598
- Compliance: ISO 5211

SYSTEM RATING	CHLORINE SERVICE	AVAILABLE MODELS
<b>CLASS 150</b>	DRY GAS -20°F TO 300°F VACUUM TO 300 PSIG	9150C 66C
<b>CLASS 300</b>	DRY GAS OR LIQUID -20°F TO 300°F VACUUM TO 300 PSIG	9300C 66C



**V BALL OPTION**  
For Fine Control