

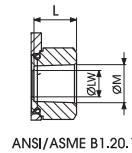
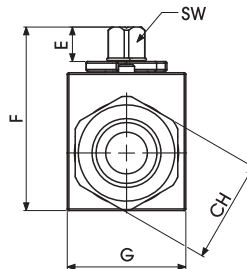
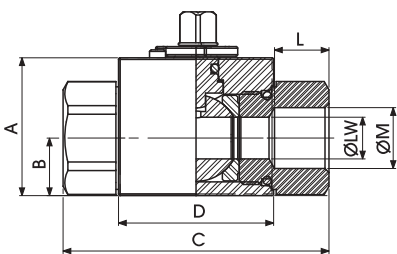
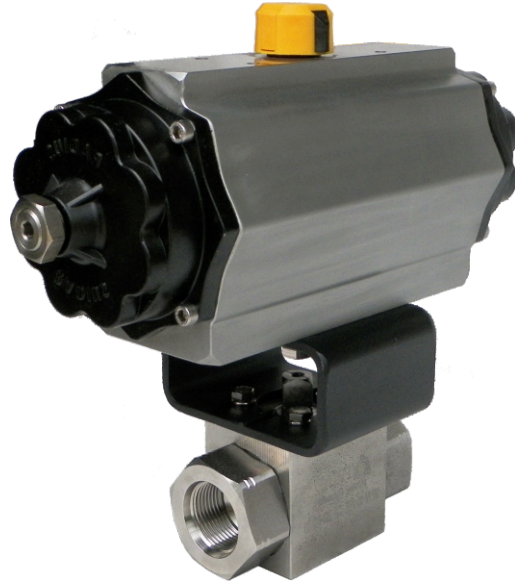


## VALVES FOR COMPRESSED NATURAL GAS PROVEN HIGH CYCLE LIFE FOR HIGH PRESSURE DISPENSING

As compressed natural gas becomes more widely used, its important to have a quality method for transferring CNG to vehicles. Triad Process Equipment has developed a ball valve allowing fast flow and longevity with max operating pressure at 6000 PSI and over 1,000,000 cycles.

### Specifications:

- Operating pressure up to 6000 PSI
- NPT and SAE ends standard
- Tested with over 1,000,000 cycles
- Manifold systems available upon request
- 3/8" through 1-1/4" available



### Dimensions

SIZE	A	B	C	D	E	F	G	L	ØM	CH	SW	ØLW	LBS.
1/8"	1.38	0.57	2.80	1.67	0.43	1.93	1.18	0.43	1/8	0.94	0.35	0.16	1
1/4"	1.38	0.57	2.80	1.67	0.43	1.93	1.18	0.67	1/4	0.94	0.35	0.24	1
1/2"	1.69	0.71	3.27	1.91	0.43	2.24	1.46	0.83	1/2	1.26	0.35	0.51	2
3/4"	2.24	0.92	3.74	2.46	0.55	2.89	1.93	0.83	3/4	1.61	0.55	0.79	3
1"	2.56	1.16	4.41	2.62	0.55	3.29	2.17	0.94	1	1.97	0.55	0.98	5

