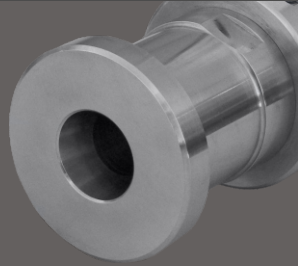


Series VS-360 Ball Valves with Grayloc[®] Connectors

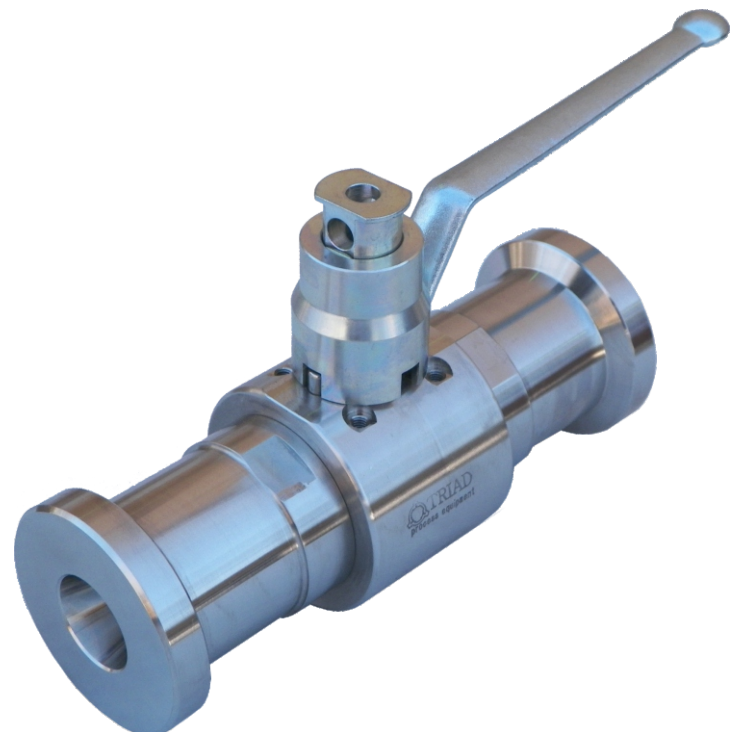
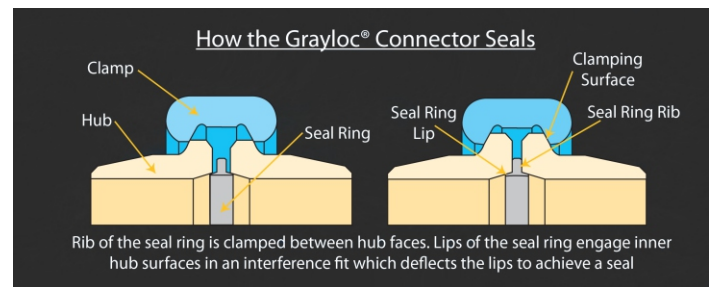


Grayloc[®] Connectors

The Triad Series VS360 with Grayloc[®] high pressure valves are 6000 PSI rated ball valves. They are specially designed to be lighter and have stronger connectors than the standard flange connectors. The Grayloc[®] connector with its metal-to-metal bore seal technology provides comparable strength and seal integrity of a welded joint with the added versatility of a mechanical joint. The Grayloc[®] connectors have applications in industries such as Oil and Gas, Marine and Aerospace. To ease assembly and disassembly in confined spaces with minimal clearance, the clamp is capable of being rotated 360° around the hub to orient the bolts. The valves are manufactured in the U.S. in an API and ISO audited manufacturing facility.

Specifications:

- Pressure Range: 6000 PSI
- Body: Carbon Steel A105 VS360-CS or Stainless Steel 316L VS360-SS
- API 607 Fire Rated / ASME B16.34 / BS5351
- Ball/Stem: 316LSS
- Seats: RPTFE with metallic insert
- Temperature Range: -10°F to 400°F with standard seats
- Standard Locking Handle Device
- Optional seats include:
 - Delrin
 - Peek
 - Kel-F
 - Metal



Grayloc[®] is a registered trademark of Oceaneering International, Inc.

Copyright 2017, Triad Process Equipment[®] Triad and Triad Process Equipment are registered trademarks. We reserve the right to make technical and or dimensional changes without prior notice.