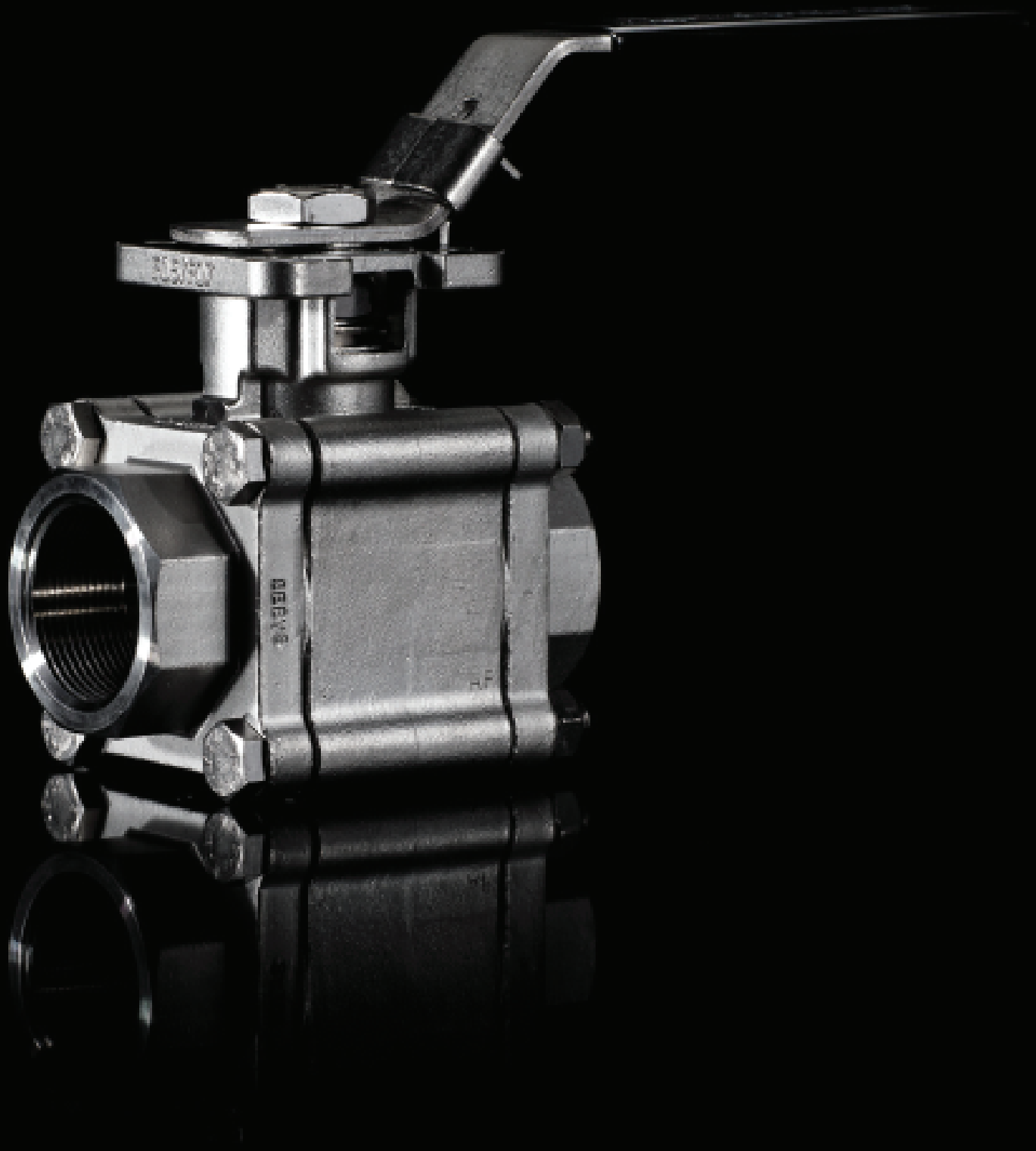


MANUFACTURERS OF HIGH QUALITY

Ball Valves, Butterfly Valves, & Control Valves



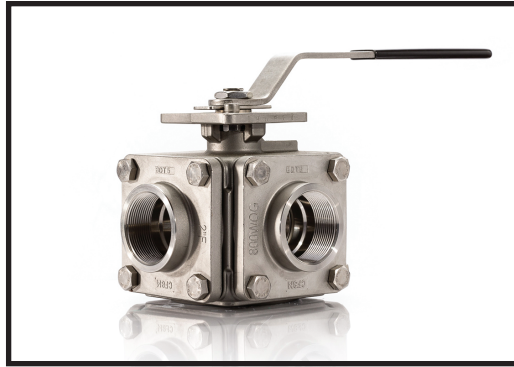
AN ISO 9001:2015 REGISTERED COMPANY



TRIAD
PROCESS EQUIPMENT



TRIAD SERIES 66FD-62011
API 607 4th EDITION FIRE RATED
SIZE: 1/4" - 4"
NPT, SW AND BW
2000 PSI 1/4" TO 1"
1500 PSI 1-1/4" TO 2"
1000 PSI 2-1/2" TO 4"
STAINLESS STEEL
ISO 5211 DIRECT MOUNTING PAD
LOCKING DEVICE
OPTIONAL V BALL
***METAL SEATING AVAILABLE**



TRIAD SERIES 36 AND 46
SIZE: 1/2" - 10"
THREE WAY & FOUR WAY
FOUR SEATED
NPT, SW, BW, 150# & 300# FLANGED
1000 PSI 1/4" TO 1"
800 PSI 1 - 1/4" TO 2"
L PORT, T PORT, OR X PORT
STAINLESS STEEL / CARBON STEEL
ISO 5211 DIRECT MOUNTING PAD
LOCKING DEVICE



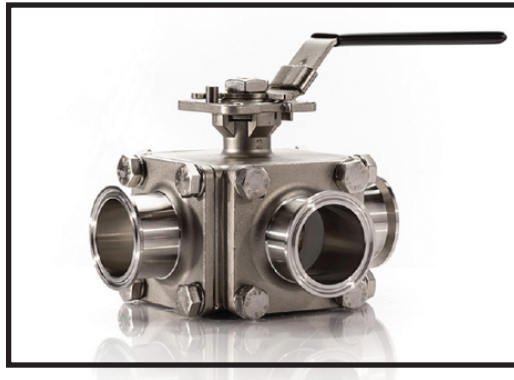
TRIAD SERIES 9150/9300/9600
API 607 4th EDITION FIRE RATED
SIZE: 1/2" - 12"
ANSI 150#, 300# & 600# FLANGED
STAINLESS STEEL/CARBON STEEL
ISO 5211 DIRECT MOUNTING PAD
LOCKING DEVICE
OPTIONAL V BALL
***METAL SEATING AVAILABLE**



TRIAD SERIES 33D
SIZE: 1/4" - 2"
NPT
1000 PSI 1/4" TO 1"
800 PSI 1 - 1/4" TO 2"
STAINLESS STEEL
TWO PIECE THREE WAY
L PORT OR T PORT
ISO 5211 DIRECT MOUNTING PAD
***AVAILABLE IN BRASS**
SIZE: 1/4" - 3"
400 PSI



TRIAD CRYOGENIC VALVE
SERIES 60C/70C/80C/90C/93C
SIZE: 1/2" - 4"
NPT, SW, BW
ANSI 150# & 300# FLANGED
STAINLESS STEEL
SEATS: KEL-F (PCTFE)
TEMPERATURE: -321° TO 392° F
ISO 5211 DIRECT MOUNTING PAD
LOCKING DEVICE
OPTIONAL V BALL



TRIAD SERIES 30-920-61
AND 40-920-61
THREE AND FOUR WAY CLAMP END
SIZE: 1/2" - 4"
1000 WOG 1/2" TO 2"
800 PSI 2 - 1/2" TO 4"
OPTIONAL WELD END
L PORT, T PORT, OR X PORT
STAINLESS STEEL
CAVITY FILLED
THROUGH PORT DESIGN
ISO 5211 DIRECT MOUNTING PAD



TRIAD V BALL VALVE
CHARECTERIZED V BALL
30°, 60°, AND 90° V-ANGLE
***CUSTOM ANGLES AVAILABLE**

SEE INDIVIDUAL SERIES FOR
SPECIFICATION DETAILS

- CRYOGENIC 60C/70C/80C/90C/93C
- 9150 / 9300
- 66



TRIAD SERIES 920-62011
SIZE: 1/2" - 4"
1000 PSI
CLAMP END VALVE
STAINLESS STEEL
CAVITY FILLED
THROUGH PORT DESIGN
ISO 5211 MOUNTING PAD
LOCKING DEVICE
***MODEL 920D DIRECT MOUNT**
ALSO AVAILABLE



TRIAD SERIES 90SV/93SV
SEGMENTED V FLOW
SIZE: 1" - 24"
150# & 300# FLANGED OR 150# & 300#
DUAL RATED WAFER
STAINLESS STEEL / CARBON STEEL
SOFT SEATED OR METAL SEATED



TRIAD SERIES 50D-62011
SIZE: 1/4" - 4"
NPT, SW & BW
1000 PSI
STAINLESS STEEL
ISO 5211 DIRECT MOUNTING PAD
LOCKING DEVICE



TRIAD METAL SEATED VALVES
SEATS: ALLOW 6 / STELLITE
BALL: ENP OR HARD CHROME PLATED
TEMPERATURES: TO 1200° F

SEE INDIVIDUAL SERIES FOR
SPECIFICATION DETAILS

- 9150 / 9300
- 66



TRIAD SERIES 50-62011
SIZE: 1/4" - 4"
NPT, SW & BW
1000 PSI 1/4" TO 2"
800 PSI 2 - 1/2" TO 4"
STAINLESS STEEL
THREE PIECE
LOCKING DEVICE



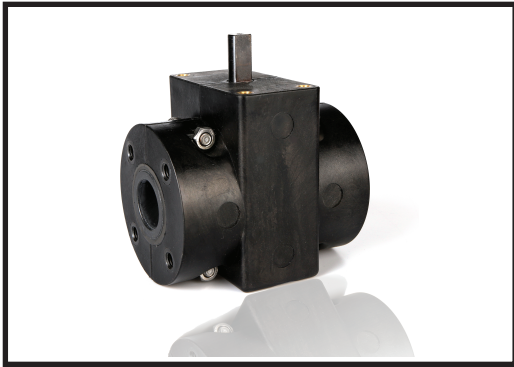
TRIAD
PROCESS EQUIPMENT



TRIAD SERIES 22D
SIZE: 1/4" - 2"
NPT
1000 WOG
STAINLESS STEEL
TWO PIECE
ISO 5211 DIRECT MOUNTING PAD
***AVAILABLE IN BRASS**
SIZE: 3/8" - 2"
600 PSI



TRIAD GRAYLOC® BALL VALVES
SERIES VS-360-GL
SIZE: TO 3"
316 SS / CARBON STEEL
6000 PSI RATED



TRIAD SERIES 4000
ROTARY PINCH VALVE
SIZE: 1-3"
QUARTER TURN OPERATION
180° F / 150# RATED
FOR SLURRY SERVICE



TRIAD SERIES XHP
SIZE: 1/8" - 1"
NPT
7250 PSI 1/8" TO 1/2"
5800 PSI 3/4"
5075 PSI 1"
STAINLESS STEEL / CARBON STEEL



BUTTERFLY VALVES

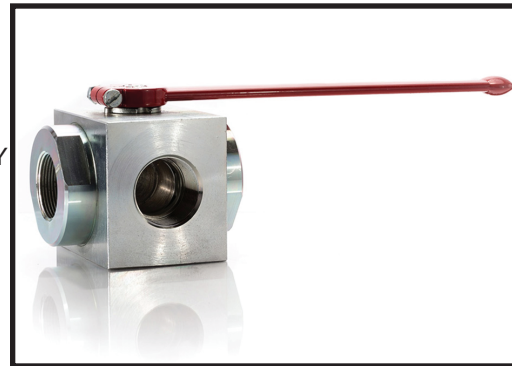
TRIAD SERIES ST
HIGH PERFORMANCE
SIZE 2" - 24"
LUG OR WAFER
CLASS 150 & 300
CAST STEEL / STAINLESS STEEL
PTFE, PTFE, BUNA, EPDM, VITON
AND METAL SEAT
ISO 5211 DIRECT MOUNTING PAD



TRIAD SERIES XHP - 3W
SIZE: 1/8" - 1"
NPT
5800 PSI 1/8" TO 3/8"
5075 PSI 1/2" TO 1"
STAINLESS STEEL / CARBON STEEL
THREE WAY L PORT



TRIAD SERIES 750 / 751
SIZE: 2" - 40"
LUG OR WAFER
DEAD END SERVICE LUG STYLE
200 PSI
EPOXY COATED DUCTILE IRON BODY
316 SS DISC
EPDM, BUNA N, VITON OR PTFE
LINERS
ISO 5211 DIRECT MOUNTING PAD



TRIAD SERIES HP- 3W
SIZE: 1 - 1/4" TO 2"
NPT
5075 PSI
STAINLESS STEEL / CARBON STEEL
THREE WAY L PORT



HIGH PRESSURE VALVES

TRIAD SERIES TRS/TRC
SIZE: 1/2" - 5"
TO 6000 PSI
SAE CODE 61, 62, AND ISO 6164
FLANGED
STAINLESS STEEL / CARBON STEEL
TRIM: 316L

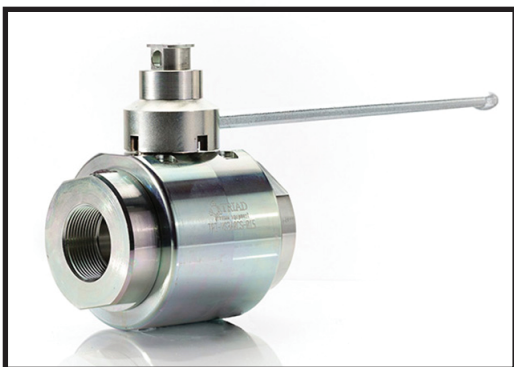


AUTOMATED VALVES

ELECTRIC
AUTOMATION IS AVAILABLE

PLEASE CONTACT SALES FOR
ADDITIONAL INFORMATION

248-685-9938
sales@triadprocess.com



TRIAD VS-260 AND VS-360
SIZE: 1/4" - 4"
NPT
6000 PSI
STAINLESS STEEL / CARBON STEEL
FIRE SAFE DESIGN
ISO 5211 ACTUATOR MOUNTING
LOCKING DEVICE



PNEUMATIC
AUTOMATION IS AVAILABLE

PLEASE CONTACT SALES FOR
ADDITIONAL INFORMATION

248-685-9938
sales@triadprocess.com



**4922 Technical Drive,
Milford, MI, 48381
248.685.9938
www.triadprocess.com**